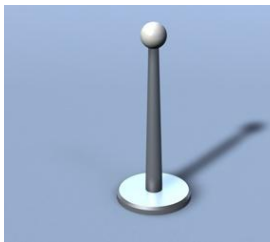


M2 and M3 STYLUS CATALOG



Contents

M2 Styli and Accessories

M2 Styli	3 - 14
M2 Extensions	15
M2 Accessories	16 - 18
M3 Styli	19 - 28
M3 Therm-X Styli and Extensions	29 - 30
M3 Extensions	31
M3 Accessories	32 - 33
Calibration spheres	34 - 35
Design your own probes	36 - 38
Part number cross-reference	39 - 40

ABOUT THIS CATALOG

This catalog contains part numbers, descriptions, and pricing for our M2 and M3 styli and tooling. To determine the correct thread size for your probe system, simply measure the thread diameter on an existing stylus. Use metric calipers for easiest results. The thread diameter in millimeters (rounded to the nearest whole number) is the correct thread size. We make styli for all size probe systems.

IMPORTANT NOTES

1. All dimensions are in millimeters. All weights are in grams.
2. All styli have tungsten carbide shafts unless otherwise specified.
3. We use **only** drilled balls for our styli, except 0.3 and 0.5 mm balls.
4. Use the largest possible ball with the shortest possible stem.
5. BEFORE MEASURING, CHECK THE PERFORMANCE OF THE PROBE HEAD AND STYLUS ON A KNOWN PART (examples: calibration sphere, ring gage, or gage block).

M2 STYLI

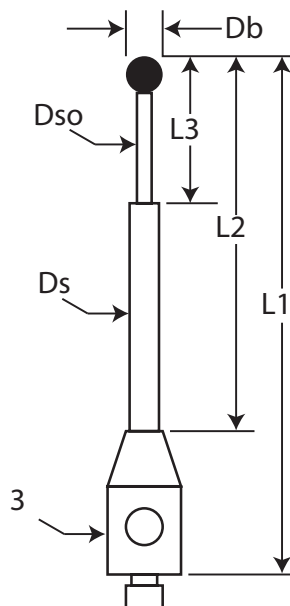
M2 styli have ball diameters ranging from 0.3 mm (.012") to 9.0 mm (.351"). The balls are ruby, carbide, or silicon nitride. All balls 0.6 mm and larger are drilled. Shaft materials include carbide, ceramic, graphite, and stainless steel. All M2 styli are guaranteed to be 100% compatible with any M2 probe system.

M2 styli with 0.3 mm and 0.5 mm balls are available with ruby or carbide balls. The carbide ball design is more robust than the ruby type. A carbide ball M2 stylus will usually absorb more shock than a ruby ball before breaking loose from the stem.

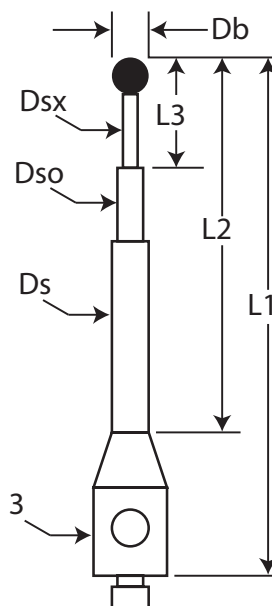
Our styli are divided into two groups: miniature styli and standard styli. Miniature styli have stepped or tapered shafts. Standard styli have straight shafts. The drawings below show the types of stepped and tapered shafts.

Stylus part number suffixes:

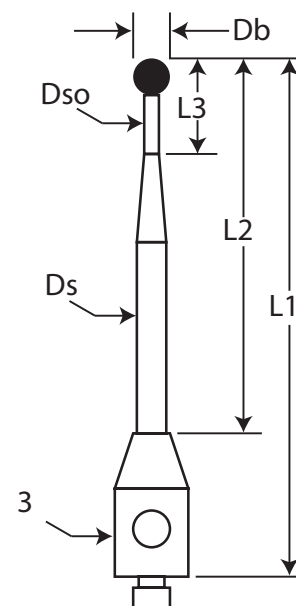
-C = carbide ball
-R = ruby ball
-S = steel shaft
-SN = silicon nitride ball



**Types A, C, E,
G, and H**



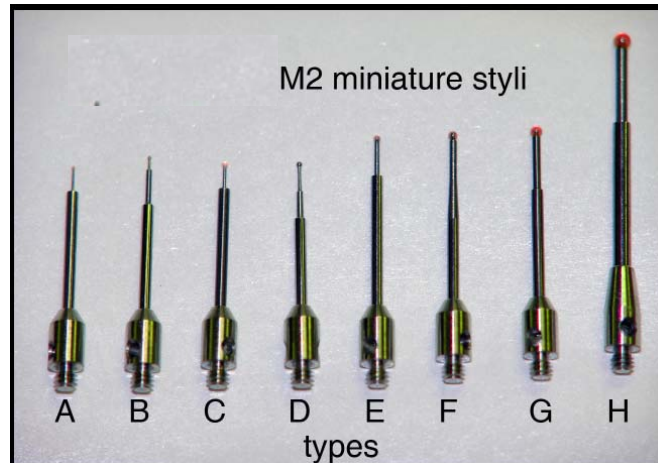
Types B and D



Type F

M2 STYLI

M2 Miniature Styli



L-R: TM2-0315-R, TM2-0315-C, TM2-0515-C, TM2-0515-R, TM2-0618, TM2-0818, TM2-1020, TM2-1530.

0.3 mm ruby or carbide balls, stepped shaft

Part Number	Db	Ds	Dso	Dsx	L1	L2	L3	Wt	Type	Notes
TM2-0310-C	0.3	1.0	0.5	0.2	10.0	5.0	1.3	<1	B	carbide ball
TM2-0310-R	0.3	1.0	0.2	-----	10.0	5.0	2.3	<1	A	eq. to A-5000-7800
TM2-0313-C	0.3	1.0	0.5	0.2	13.0	8.0	1.3	<1	B	carbide ball
TM2-0315-C	0.3	1.0	0.5	0.2	15.0	10.0	1.3	<1	B	carbide ball
TM2-0318-C	0.3	1.0	0.5	0.2	18.0	13.0	1.3	<1	B	carbide ball
TM2-0318-R	0.3	1.0	0.2	-----	18.0	13.0	2.3	<1	A	ruby ball
TM2-0319-C	0.3	1.0	0.5	0.2	19.0	14.0	1.3	<1	B	carbide ball
TM2-0323-R	0.3	1.0	0.2	-----	23.0	15.0	2.3	<1	A	ruby ball

0.5 mm ruby or carbide balls, stepped shaft

Part Number	Db	Ds	Dso	Dsx	L1	L2	L3	Wt	Type	Notes
TM2-0510-C	0.5	1.0	0.6	0.3	10.0	5.0	2.5	<1	D	carbide ball
TM2-0510-R	0.5	1.0	0.3	-----	10.0	5.0	2.5	<1	C	eq. to A-5000-7805
TM2-0513-C	0.5	1.0	0.6	0.3	13.0	10.0	2.5	<1	D	carbide ball
TM2-0515-C	0.5	1.0	0.6	0.3	15.0	10.0	2.5	<1	D	carbide ball
TM2-0518-C	0.5	1.0	0.6	0.3	18.0	13.0	2.5	<1	D	carbide ball
TM2-0518-R	0.5	1.0	0.3	-----	18.0	13.0	2.5	<1	C	ruby ball
TM2-0519-R	0.5	1.0	0.3	-----	19.0	14.0	2.5	<1	C	ruby ball
TM2-0520-C	0.5	1.0	0.6	0.3	20.0	15.0	2.5	<1	D	carbide ball

0.6 mm ruby or carbide balls, stepped shaft

Part Number	Db	Ds	Dso	L1	L2	L3	Wt	Type	Notes
TM2-0610	0.6	1.0	0.4	10.0	5.0	4.0	<1	E	ruby ball
TM2-0615	0.6	1.0	0.4	15.0	10.0	4.0	<1	E	ruby ball
TM2-0618	0.6	1.0	0.4	18.0	13.0	4.0	<1	E	ruby ball
TM2-0620	0.6	1.0	0.4	20.0	15.0	4.0	<1	E	ruby ball
TM2-0620-C	0.6	1.0	0.4	20.0	15.0	4.0	<1	E	carbide ball

M2 STYLI

0.7 mm ruby balls, straight shaft

<u>Part Number</u>	<u>Db</u>	<u>L1</u>	<u>Ds</u>	<u>Wt</u>	<u>Type</u>	<u>Notes</u>
TM2-0710	0.7	10	0.5	<1	straight shaft	eq. to A-5000-7801
TM2-0715	0.7	15	0.5	<1	straight shaft	
TM2-0720	0.7	20	0.5	<1	straight shaft	eq. to A-5003-0577

0.8 mm ruby balls, tapered shaft

<u>Part Number</u>	<u>Db</u>	<u>Ds</u>	<u>Dso</u>	<u>L1</u>	<u>L2</u>	<u>L3</u>	<u>Wt</u>	<u>Type</u>	
TM2-0812	0.8	1.0	0.6	12.0	7.0	4.0	<1	F	
TM2-0815	0.8	1.0	0.6	15.0	10.0	4.0	<1	F	
TM2-0818	0.8	1.0	0.6	18.0	13.0	4.0	<1	F	
TM2-0820	0.8	1.0	0.6	20.0	15.0	4.0	<1	F	

0.8 mm ruby balls, straight shaft

<u>Part Number</u>	<u>Db</u>	<u>L1</u>	<u>Ds</u>	<u>Wt</u>	<u>Notes</u>
TM2-0820-DS.7	0.8	20.0	0.7	<1	straight shaft, 0.7 mm dia
TM2-0825-DS.7	0.8	25.0	0.7	<1	straight shaft, 0.7 mm dia

1.0 mm ruby or silicon nitride balls, stepped shafts

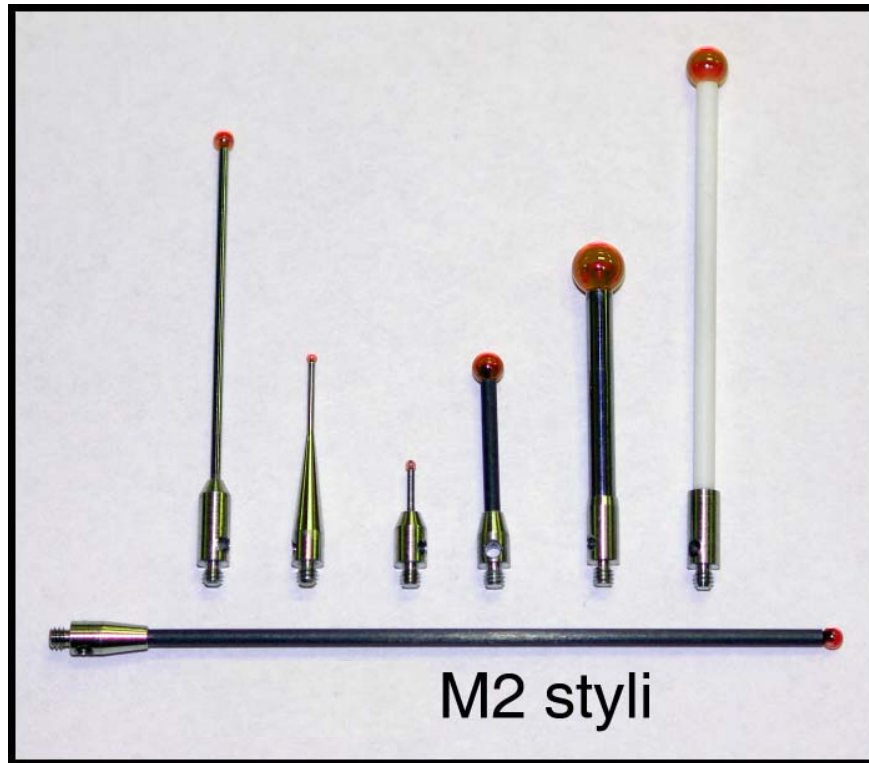
<u>Part Number</u>	<u>Db</u>	<u>Ds</u>	<u>Dso</u>	<u>L1</u>	<u>L2</u>	<u>L3</u>	<u>Wt</u>	<u>Type</u>	<u>Notes</u>
TM2-1010.5	1.0	1.0	0.7	10.5	5.5	5.0	<1	G	
TM2-1011.5	1.0	1.0	0.7	11.5	6.5	5.0	<1	G	
TM2-1012	1.0	1.0	0.7	12.0	7.0	5.0	<1	G	
TM2-1012-SN	1.0	1.0	0.7	12.0	7.0	5.0	<1	G	silicon nitride ball
TM2-1013	1.0	1.0	0.7	13.0	8.0	5.0	<1	G	
TM2-1015	1.0	1.0	0.7	15.0	10.0	5.0	<1	G	
TM2-1015.5	1.0	1.0	0.7	15.5	10.5	5.0	<1	G	
TM2-1016	1.0	1.0	0.7	16.0	11.0	5.0	<1	G	
TM2-1018	1.0	1.0	0.7	18.0	13.0	5.0	<1	G	
TM2-1020	1.0	1.0	0.7	20.0	15.0	5.0	<1	G	
TM2-1020-S	1.0	1.0	0.7	20.0	15.0	-----	<1		steel shaft
TM2-1020-SN	1.0	1.0	0.7	20.0	15.0	5.0	<1	G	silicon nitride ball
TM2-1022	1.0	1.0	0.7	22.0	14.0	5.0	<1	G	
TM2-1025	1.0	1.0	0.7	25.0	17.0	5.0	<1	G	
TM2-1027	1.0	1.0	0.7	27.0	19.0	5.0	<1	G	
TM2-1027-SN	1.0	1.0	0.7	27.0	19.0	5.0	<1	G	silicon nitride ball
TM2-1027.5	1.0	1.0	0.7	27.5	19.5	5.0	<1	G	
TM2-1030	1.0	1.0	0.7	30.0	22.0	5.0	<1	G	
TM2-1030-SN	1.0	1.0	0.7	30.0	22.0	5.0	<1	G	silicon nitride ball
TM2-1041	1.0	1.0	0.7	41.0	33.0	5.0	<1	G	
TM2-1065	1.0	1.0	0.7	65.0	57.0	5.0	<1	G	
TM2-1080	1.0	1.0	0.7	80.0	72.0	5.0	<1	G	

1.5 mm ruby or silicon nitride balls, stepped shafts

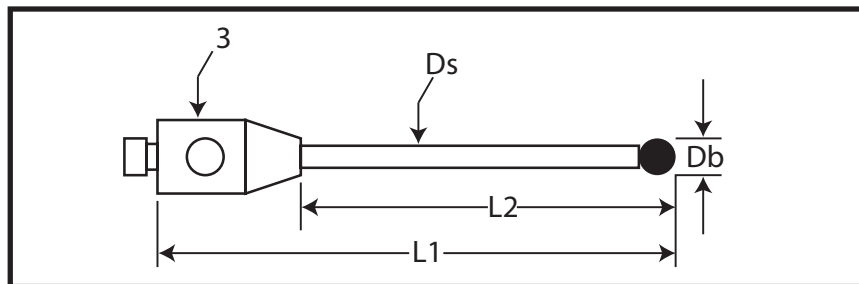
<u>Part Number</u>	<u>Db</u>	<u>Ds</u>	<u>Dso</u>	<u>L1</u>	<u>L2</u>	<u>L3</u>	<u>Wt</u>	<u>Type</u>	<u>Notes</u>
TM2-1530	1.5	1.5	1.0	30.0	22.0	8.0	1	H	
TM2-1530-SN	1.5	1.5	1.0	30.0	22.0	8.0	1	H	silicon nitride ball
TM2-1540	1.5	1.5	1.0	40.0	32.0	8.0	1	H	

M2 STYLI

M2 Standard Styli

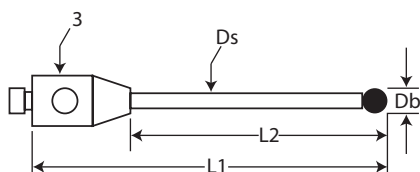


Top row, L-R: TM2-2042, TM2-1020-S, TM2-1010, TM2-3020-G, TM2-5030, TM2-4050-C.
Bottom, horizontal: TM2-2070-G



Standard styli are available in hundreds of configurations. Ball sizes range from 1.0 mm (.039") to 9.0 mm (.351"). Ball materials are ruby and silicon nitride. Shaft materials include carbide, ceramic, graphite, and stainless steel. Bases are stainless steel. All standard styli are guaranteed to be 100% compatible with any M2 probe system.

Please call us if you have any questions about the selection and use of the correct styli for your application.



M2 STYLI

1.0 mm ruby or silicon nitride balls

Part Number	Db	L1	L2	Ds	Wt	Notes
TM2-1005	1.0	6.0	1.0	0.7	<1	
TM2-1010	1.0	10.0	5.0	0.7	<1	
TM2-1010-S	1.0	10.0	5.0	0.7	<1	eq. to A-5000-7806
TM2-1010-SN	1.0	10.0	5.0	0.7	<1	silicon nitride ball
TM2-1015-DS.7	1.0	15.0	10.0	0.7	<1	
TM2-1015-DS.7-SN	1.0	15.0	10.0	0.7	<1	silicon nitride ball
TM2-1020-DS.7	1.0	20.0	15.0	0.7	<1	
TM2-1020-DS.7-SN	1.0	20.0	15.0	0.7	<1	silicon nitride ball
TM2-1020-DS.8	1.0	20.0	8.0	0.8	<1	eq. to A-5003-0033
TM2-1020-07	1.0	20.0	7.0	0.7	<1	eq. to A-5000-7808
TM2-1020.5-07	1.0	20.5	7.5	0.7	<1	
TM2-1025-DS.7	1.0	25.0	17.0	0.7	<1	
TM2-1027-DS.7	1.0	27.0	19.0	0.7	<1	eq. to A-5000-8663
TM2-1027-DS.7-SN	1.0	27.0	19.0	0.7	<1	silicon nitride ball
TM2-1030-DS.7	1.0	30.0	22.0	0.7	<1	
TM2-1034-DS.7	1.0	34.0	26.0	0.7	<1	
TM2-1055-DS.7	1.0	55.0	47.0	0.7	<1	

1.5 mm ruby or silicon nitride balls

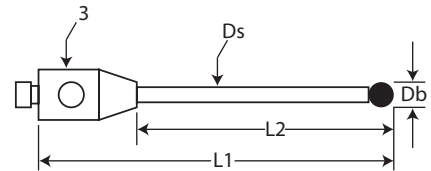
Part Number	Db	L1	L2	Ds	Wt	Notes
TM2-1509.5	1.5	9.5	4.5	1.0	1	
TM2-1510	1.5	10	5	1.0	1	
TM2-1510-S	1.5	10	5	1.0	1	eq. to A-5000-7802
TM2-1510.75	1.5	10.75	5.75	1.0	1	
TM2-1512-SN	1.5	12	7	1.0	1	silicon nitride ball
TM2-1515	1.5	15	10	1.0	1	
TM2-1515.75	1.5	15.75	10.75	1.0	1	
TM2-1520	1.5	20	15	1.0	1	eq. to A-5003-0034
TM2-1520-S	1.5	20	15	1.0	1	stainless steel shaft
TM2-1520-SN	1.5	20	15	1.0	1	silicon nitride ball
TM2-1520.75	1.5	20.75	15.75	1.0	1	
TM2-1521-DS.7	1.5	21	16	0.7	1	
TM2-1525	1.5	25	20	1.0	1	
TM2-1525-SN	1.5	25	20	1.0	1	silicon nitride ball
TM2-1530-DS1	1.5	30	22	1.0	1	eq. to A-5003-0035
TM2-1530-DS1-SN	1.5	30	22	1.0	1	silicon nitride ball
TM2-1530.75	1.5	30.75	22.75	1.0	1	
TM2-1535-DS1	1.5	35	27	1.0	1	

2.0 mm ruby or silicon nitride balls

Part Number	Db	L1	L2	Ds	Wt	Notes
TM2-2010	2.0	10	5	1.0	1	
TM2-2010-S	2.0	10	5	1.0	1	eq. to A-5000-7807
TM2-2011	2.0	11	6	1.0	1	
TM2-2012	2.0	12	7	1.0	1	

continued next page...

M2 STYLI



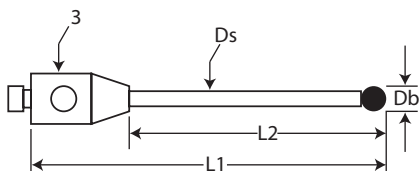
continued from previous page....

2.0 mm ruby or silicon nitride balls

<u>Part Number</u>	<u>Db</u>	<u>L1</u>	<u>L2</u>	<u>Ds</u>	<u>Wt</u>	<u>Notes</u>
TM2-2012.5	2.0	12.5	7.5	1.0	1	
TM2-2013	2.0	13	8	1.0	1	
TM2-2015	2.0	15	10	1.0	1	
TM2-2016	2.0	16	11	1.0	1	
TM2-2016-4	2.0	16	4	1.0	1	
TM2-2017	2.0	17	12	1.0	1	
TM2-2020	2.0	20	15	1.0	1	
TM2-2020-S	2.0	20	15	1.0	1	eq. to A-5000-3603
TM2-2020-SN	2.0	20	15	1.0	1	silicon nitride ball
TM2-2021	2.0	21	16	1.0	1	
TM2-2021-6	2.0	21	15	1.0	1	
TM2-2025	2.0	25	20	1.0	1	
TM2-2025-SN	2.0	25	20	1.0	1	silicon nitride ball
TM2-2030	2.0	30	23	1.5	1	
TM2-2030-SN	2.0	30	23	1.5	1	silicon nitride ball
TM2-2031	2.0	31	24	1.5	1	eq. to A-5003-0036
TM2-2033	2.0	33	26	1.5	1	
TM2-2035	2.0	35	28	1.5	1	
TM2-2040	2.0	40	33	1.5	1	
TM2-2040-SN	2.0	40	33	1.5	1	silicon nitride ball
TM2-2041	2.0	41	34	1.5	1	eq. to A-5003-0037
TM2-2042	2.0	42	35	1.5	1	
TM2-2050	2.0	50	43	1.5	1	
TM2-2050-SN	2.0	50	43	1.5	1	silicon nitride ball
TM2-2051	2.0	51	44	1.5	1	
TM2-2060	2.0	60	53	1.5	1	
TM2-2065	2.0	65	58	1.5	1	
TM2-2070	2.0	70	63	1.5	1	
TM2-2070-G	2.0	70	63	1.5	1	graphite stem

2.5 mm ruby or silicon nitride balls

<u>Part Number</u>	<u>Db</u>	<u>L1</u>	<u>L2</u>	<u>Ds</u>	<u>Wt</u>	<u>Notes</u>
TM2-2510	2.5	10	5	1.5	1	
TM2-2510-S	2.5	10.25	5	1.5	1	eq. to A-5000-7803
TM2-2520	2.5	20	15	1.5	1	
TM2-2520-SN	2.5	20	15	1.5	1	silicon nitride ball
TM2-2520-S	2.5	20.25	15	1.5	1	eq. to A-5000-7804
TM2-2521	2.5	21	16	1.5	1	
TM2-2530	2.5	30	23	1.5	1	
TM2-2531	2.5	31.25	24	1.5	1	eq. to A-5003-0038
TM2-2540	2.5	40	33	1.5	1	
TM2-2540-SN	2.5	40	33	1.5	1	silicon nitride ball
TM2-2541	2.5	41.25	34	1.5	1	eq. to A-5003-0039
TM2-2550	2.5	50	43	1.5	1	
TM2-2551.25	2.5	51.25	44.25	1.5	1	
TM2-2552	2.5	52	45	1.5	1	



M2 STYLI

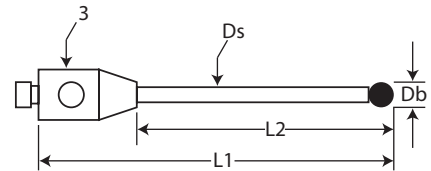
3.0 mm ruby or silicon nitride balls

<u>Part Number</u>	<u>Db</u>	<u>L1</u>	<u>L2</u>	<u>Ds</u>	<u>Wt</u>	<u>Notes</u>
TM2-3010	3.0	10	5	1.5	1	
TM2-3010-S	3.0	10	5	1.5	1	eq. to A-5000-3604
TM2-3018	3.0	18	13	1.5	1	
TM2-3020	3.0	20	15	1.5	1	
TM2-3020-G	3.0	20	15	1.5	1	graphite shaft
TM2-3020-S	3.0	20	15	1.5	1	eq. to A-5000-4160
TM2-3020-SN	3.0	20	15	1.5	1	silicon nitride ball
TM2-3021	3.0	21	16	1.5	1	
TM2-3021-SN	3.0	21	16	1.5	1	silicon nitride ball
TM2-3022	3.0	22	16	1.5	1	
TM2-3022-6	3.0	22	6	1.5	1	
TM2-3024	3.0	24	19	1.5	1	
TM2-3025.5	3.0	25.5	20.5	1.5	1	
TM2-3030	3.0	30	23	1.5	2	
TM2-3030-G	3.0	30	23	1.5	1	graphite shaft
TM2-3030-SN	3.0	30	23	1.5	2	silicon nitride ball
TM2-3031	3.0	31	24	1.5	2	
TM2-3031-C	3.0	31	24	1.5	1	ceramic shaft
TM2-3031.5	3.0	31.5	24.5	1.5	1	eq. to A-5003-0040
TM2-3032-G	3.0	32	25	1.5	1	graphite shaft
TM2-3040	3.0	40	33	2.0	2	
TM2-3040-G	3.0	40	33	2.0	1	graphite shaft
TM2-3041	3.0	41	34	2.0	2	
TM2-3041-G	3.0	41	34	2.0	2	graphite shaft
TM2-3041.5	3.0	41.5	34.5	2.0	2	eq. to A-5003-0041
TM2-3043	3.0	43	36	2.0	2	
TM2-3045	3.0	45	38	2.0	2	
TM2-3050	3.0	50	43	2.0	2	
TM2-3050-C	3.0	50	43	2.0	1	ceramic shaft
TM2-3050-C-SN	3.0	50	43	2.0	1	ceramic shaft & sil. nitride ball
TM2-3050-SN	3.0	50	43	2.0	1	silicon nitride ball
TM2-3051	3.0	51	44	2.0	2	
TM2-3051-C	3.0	51	44	2.0	1	ceramic shaft
TM2-3051-C-SN	3.0	51	44	2.0	1	ceramic shaft & sil. nitride ball
TM2-3051.5	3.0	51.5	44.5	2.0	2	eq. to A-5003-0042
TM2-3051.5-C	3.0	51.5	44.5	2.0	2	eq. to A-5003-0064
TM2-3053	3.0	53	46	2.0	2	
TM2-3060	3.0	60	53	2.0	3	
TM2-3060-C	3.0	60	53	2.0	2	ceramic shaft
TM2-3070-C	3.0	70	63	2.0	2	ceramic shaft
TM2-3071	3.0	71	64	2.0	3	
TM2-3090	3.0	90	83	2.0	3	

3.5 mm ruby balls

<u>Part Number</u>	<u>Db</u>	<u>L1</u>	<u>L2</u>	<u>Ds</u>	<u>Wt</u>	<u>Notes</u>
TM2-3520-S	3.5	20	15	2.0	2	Stainless steel shaft
TM2-3596	3.5	96	89	2.0	3	

M2 STYLI

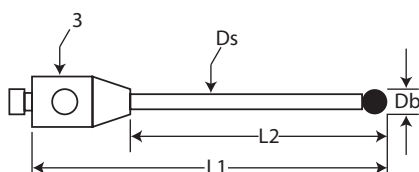


4 mm ruby or silicon nitride balls

<u>Part Number</u>	<u>Db</u>	<u>L1</u>	<u>L2</u>	<u>Ds</u>	<u>Wt</u>	<u>Notes</u>
TM2-4010	4.0	10	5	2	2 48.00	
TM2-4010-S	4.0	10	5	2	2 22.00	eq. to A-5000-4154
TM2-4012	4.0	12	7	2	2 48.00	
TM2-4020	4.0	20	15	2	2	
TM2-4020-S	4.0	20	13	2	2	eq. to A-5000-4161
TM2-4022	4.0	22	17	2	2	
TM2-4025	4.0	25	20	2	2	
TM2-4027-SN	4.0	27	20	2	2	silicon nitride ball
TM2-4030	4.0	30	23	2	2	
TM2-4030-C	4.0	30	23	2	1	ceramic shaft
TM2-4030-G	4.0	30	23	2	1	graphite shaft
TM2-4032	4.0	32	25	2	2	eq. to A-5003-0043
TM2-4032-C	4.0	32	25	2	1	ceramic shaft
TM2-4032-G	4.0	32	25	2	1	graphite shaft
TM2-4035-G	4.0	32	25	2	1	graphite shaft
TM2-4040	4.0	40	33	2	2	
TM2-4040-SN	4.0	40	33	2	2	
TM2-4042	4.0	42	35	2	2	eq. to A-5003-0044
TM2-4042-C	4.0	42	35	2	1	ceramic shaft
TM2-4042-G	4.0	42	35	2	1	graphite shaft
TM2-4050	4.0	50	43	2	2	
TM2-4050-C	4.0	50	43	2	1	ceramic shaft
TM2-4050-G	4.0	50	43	2	1	graphite shaft
TM2-4050-SN	4.0	50	43	2	2	silicon nitride ball
TM2-4051-C	4.0	51	44	2	1	ceramic shaft
TM2-4052	4.0	52	45	2	2	eq. to A-5003-0045
TM2-4052-C	4.0	52	45	2	1	eq. to A-5003-0065
TM2-4052-G	4.0	52	45	3	1	eq. to A-5003-2285
TM2-4077-G	4.0	77	70	2.5	2	graphite shaft
TM2-4082-C	4.0	82	75	2.5	2	ceramic shaft
TM2-4090	4.0	90	83	2	3	
TM2-40100-C	4.0	100	93	2.5	2	ceramic shaft
TM2-40102-G	4.0	102	95	2.5	2	graphite shaft

5 mm ruby or silicon nitride balls

<u>Part Number</u>	<u>Db</u>	<u>L1</u>	<u>L2</u>	<u>Ds</u>	<u>Wt</u>	<u>Notes</u>
TM2-5010	5.0	10	4	2.5	2	
TM2-5010-S	5.0	10	4	2.5	2	eq. to A-5000-4155
TM2-5010-SN	5.0	10	4	2.5	2	Silicon nitride ball
TM2-5011	5.0	11	5	2.5	2	
TM2-5020	5.0	20	14	2.5	2	
TM2-5020-G	5.0	20	14	2.5	1	graphite shaft
TM2-5022.5	5.0	22.5	16.5	2.5	2	eq. to A-5003-0046
TM2-5030	5.0	30	24	2.5	3	
TM2-5032	5.0	32	26	2.5	3	
TM2-5032-C	5.0	32	26	2.5	1	ceramic shaft
TM2-5032-G	5.0	32	26	2.5	1	graphite shaft
TM2-5032.5	5.0	32.5	26.5	2.5	3	eq. to A-5003-0047



M2 STYLI

continued from previous page....

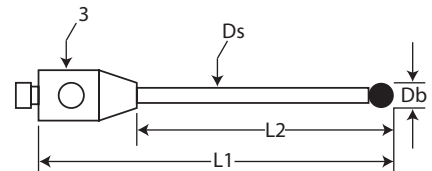
5 mm ruby or silicon nitride balls

<u>Part Number</u>	<u>Db</u>	<u>L1</u>	<u>L2</u>	<u>Ds</u>	<u>Wt</u>	<u>Notes</u>
TM2-5040	5.0	40	34	2.5	3	
TM2-5040-G	5.0	40	34	2.5	2	graphite shaft
TM2-5042	5.0	42	36	2.5	3	
TM2-5042.5	5.0	42.5	36.5	2.5	3	eq. to A-5003-0048
TM2-5042.5-C	5.0	42.5	36.5	2.5	2	ceramic shaft
TM2-5050	5.0	50	44	2.5	4	
TM2-5050-C	5.0	50	44	2.5	2	ceramic shaft
TM2-5050-G	5.0	50	44	2.5	2	graphite shaft
TM2-5050-SN	5.0	50	44	2.5	2	silicon nitride ball
TM2-5052	5.0	52	46	2.5	4	
TM2-5052-C	5.0	52	46	2.5	2	ceramic shaft
TM2-5052.5	5.0	52.5	46.5	2.5	4	eq. to A-5003-0049
TM2-5052.5-C	5.0	52.5	46.5	2.5	2	eq. to A-5003-0066
TM2-5052.5-C-SN	5.0	52.5	46.5	2.5	2	ceramic shaft & sil. nitride ball
TM2-5052.5-G	5.0	52.5	46.5	3	2	eq. to A-5003-2286
TM2-5060-G	5.0	60	53	2.5	2	graphite shaft
TM2-5070-C	5.0	70	63	2.5	2	ceramic shaft
TM2-5070-G	5.0	70	63	2.5	2	graphite shaft
TM2-5075-SN	5.0	75	68	2.5	2	silicon nitride ball
TM2-5077-G	5.0	77	70	2.5	2	graphite shaft
TM2-5080-C	5.0	80	73	2.5	2	ceramic shaft
TM2-5080-G	5.0	80	73	2.5	2	graphite shaft
TM2-50100-G	5.0	100	93	2.5	2	graphite shaft
TM2-50102-G	5.0	102	95	2.5	2	graphite shaft
TM2-50115-G	5.0	115	108	2.5	2	graphite shaft

6 mm ruby balls

<u>Part Number</u>	<u>Db</u>	<u>L1</u>	<u>L2</u>	<u>Ds</u>	<u>Wt</u>	<u>Notes</u>
TM2-6010	6.0	10	5	2.0	2	
TM2-6010-S	6.0	10	5	2.0	2	eq. to A-5000-4156
TM2-6020-G	6.0	20	13	2.0	1	graphite shaft
TM2-6025	6.0	25	18	2.0	2	
TM2-6030	6.0	30	23	2.0	2	
TM2-6030-G	6.0	30	23	3.0	1	graphite shaft
TM2-6033-C	6.0	33	26	2.5	1	ceramic shaft
TM2-6033-G	6.0	33	26	3.0	1	graphite shaft
TM2-6040-G	6.0	40	33	3.0	1	graphite shaft
TM2-6050	6.0	50	43	2.5	3	
TM2-6050-C	6.0	50	43	2.5	1	ceramic shaft
TM2-6050-G	6.0	50	43	3.0	1	graphite shaft
TM2-6053-C	6.0	53	46	2.5	1	ceramic shaft
TM2-6053-G	6.0	53	46	3	1	eq. to A-5003-2287
TM2-6070-C	6.0	70	63	2.5	2	ceramic shaft
TM2-6070-G	6.0	70	63	2.5	2	graphite shaft
TM2-6078-G	6.0	78	71	2.5	2	graphite shaft
TM2-6080-C	6.0	80	73	2.5	2	ceramic shaft
TM2-6080-G	6.0	80	73	2.5	2	graphite shaft
TM2-6088-G	6.0	88	81	2.5	2	graphite shaft
TM2-60103-G	6.0	103	96	2.5	2	graphite shaft

M2 STYLI



7 mm ruby balls

<u>Part Number</u>	<u>Db</u>	<u>L1</u>	<u>L2</u>	<u>Ds</u>	<u>Wt</u>	<u>Notes</u>
TM2-70103.5-G	7.0	103.5	96.5	2.5	2	graphite shaft

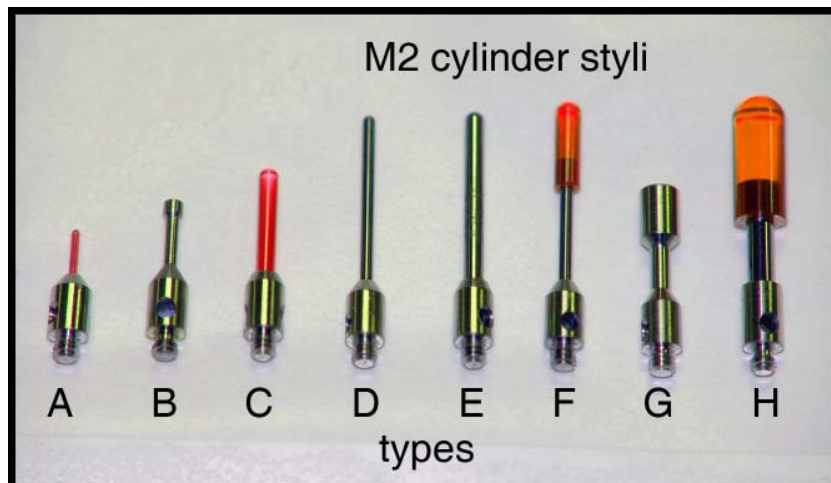
8 mm ruby or silicon nitride balls

<u>Part Number</u>	<u>Db</u>	<u>L1</u>	<u>L2</u>	<u>Ds</u>	<u>Wt</u>	<u>Notes</u>
TM2-8010	8.0	14	8	3	3	
TM2-8010-S	8.0	14	8	3	2	eq. to A-5000-4158
TM2-8010-SN	8.0	14	8	3	3	silicon nitride ball
TM2-8013	8.0	13	8	3	3	
TM2-8015	8.0	15	8	3	3	
TM2-8015-S	8.0	15	8	3	3	stainless steel shaft
TM2-8015-SN	8.0	15	8	3	3	silicon nitride ball
TM2-8020-G	8.0	20	13	3.5	1	graphite shaft
TM2-8050-G	8.0	50	43	3.5	1	graphite shaft
TM2-8060-G	8.0	60	53	3.5	1	graphite shaft

9 mm ruby balls

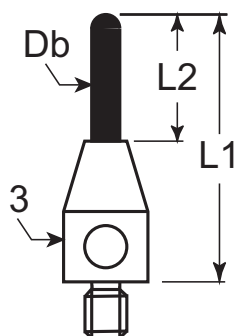
<u>Part Number</u>	<u>Db</u>	<u>L1</u>	<u>L2</u>	<u>Ds</u>	<u>Wt</u>	<u>Notes</u>
TM2-9016	9.0	16	9	3.5	3	

M2 Cylinder Styli

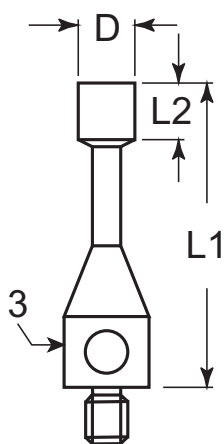


Cylinder styli have tips made from ruby, carbide, or stainless steel. They are available in 8 types. All types except B and G have full radii at the tip (bullet noses). Types B and G have flat tips. Cylinder styli are often used to measure formed or stamped sheet metal by touching the side of the cylinder against the edge of the sheet metal. Slight measurement error is common because the cylinder is almost never exactly square to the plane of the sheet metal. However, any error is usually well within the tolerances of most sheet metal work.

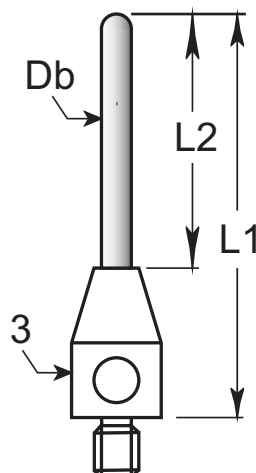
M2 STYLI



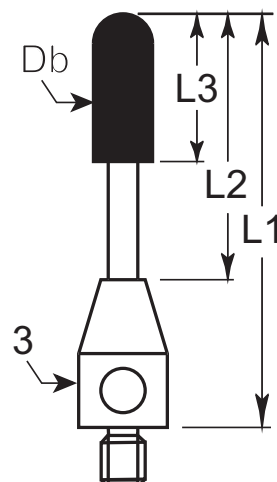
Types A & C



Types B & G



Types D & E



Types F & H

M2 Cylinder Styli

0.3 mm cylinder

<u>Part Number</u>	<u>Db</u>	<u>L1</u>	<u>L2</u>	<u>Wt</u>	<u>Material</u>	<u>Type</u>	<u>Notes</u>
TM2-0310-BC	0.3	10.0	5.0	1	Carbide	D	eq. to A-5003-1208

0.5 mm cylinder

<u>Part Number</u>	<u>Db</u>	<u>L1</u>	<u>L2</u>	<u>Wt</u>	<u>Material</u>	<u>Type</u>	<u>Notes</u>
TM2-0515-BC	0.5	15.0	8.0	1	Carbide	D	eq. to A-5003-1210

0.6 mm cylinder

<u>Part Number</u>	<u>Db</u>	<u>L1</u>	<u>L2</u>	<u>Wt</u>	<u>Material</u>	<u>Type</u>	<u>Notes</u>
TM2-0608-B	0.6	8.0	3.0	1	Ruby	A	

0.7 mm cylinder

<u>Part Number</u>	<u>Db</u>	<u>L1</u>	<u>L2</u>	<u>Wt</u>	<u>Material</u>	<u>Type</u>	<u>Notes</u>
TM2-0715-BC	0.7	15.0	8.0	1	Carbide	D	
TM2-0720-BC	0.7	20.0	13.0	1	Carbide	D	

1.0 mm cylinder

<u>Part Number</u>	<u>Db</u>	<u>L1</u>	<u>L2</u>	<u>Wt</u>	<u>Material</u>	<u>Type</u>	<u>Notes</u>
TM2-1014-B	1.0	14.0	9.0	1	Ruby	A	
TM2-1014-BC	1.0	14.0	9.0	1	Carbide	D	
TM2-1015-B	1.0	15.0	8.0	1	Ruby	A	eq. to A-5000-8876
TM2-1015-BC	1.0	15.0	8.0	1	Carbide	D	
TM2-1020-BC	1.0	20.0	13.0	1	Carbide	D	
TM2-1030-BC	1.0	30.0	23.0	1	Carbide	D	
TM2-1036-BC	1.0	36.0	29.0	1	Carbide	D	eq. to A-5003-1218

M2 STYLI

Cylinder Styli

1.5 mm cylinder

<u>Part Number</u>	<u>Db</u>	<u>L1</u>	<u>L2</u>	<u>Wt</u>	<u>Material</u>	<u>Type</u>	<u>Notes</u>
TM2-1511-CYL	1.5	11.0	1.5	1	Stnls Steel	B	eq. to M-5000-4152
TM2-1514-B	1.5	14.0	9.0	1	Ruby	C	
TM2-1515-B	1.5	15.0	9.0	1	Ruby	C	eq. to A-5000-8877
TM2-1516-BC	1.5	16.0	11.0	1	Carbide	D	eq. to A-5003-1219
TM2-1520-BC	1.5	20.0	15.0	1	Carbide	D	
TM2-1540-BC	1.5	40.0	35.0	1	Carbide	D	

2.0 mm carbide cylinder

<u>Part Number</u>	<u>Db</u>	<u>L1</u>	<u>L2</u>	<u>Wt</u>	<u>Material</u>	<u>Type</u>	<u>Notes</u>
TM2-2016-BC	2.0	16.0	11.0	1	Carbide	E	eq. to A-5003-1228
TM2-2040-BC	2.0	40.0	35.0	2	Carbide	E	eq. to A-5003-0074
TM2-2042-BC	2.0	42.0	37.0	2	Carbide	E	
TM2-2048-BC	2.0	48.0	43.0	2	Carbide	E	

2.0 mm ruby cylinder

<u>Part Number</u>	<u>Db</u>	<u>L1</u>	<u>L2</u>	<u>L3</u>	<u>Wt</u>	<u>Material</u>	<u>Type</u>	<u>Notes</u>
TM2-2021-B	2.0	21.0	16.0	7.2	1	Ruby	F	eq. to A-5000-7812
TM2-2025-B	2.0	25.0	20.0	7.2	1	Ruby	F	
TM2-2035-B	2.0	35.0	30.0	7.2	1	Ruby	F	
TM2-2040-B	2.0	40.0	35.0	7.2	1	Ruby	F	

3.0 mm cylinder

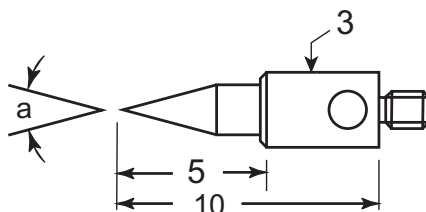
<u>Part Number</u>	<u>Db</u>	<u>L1</u>	<u>L2</u>	<u>Wt</u>	<u>Material</u>	<u>Type</u>	<u>Notes</u>
TM2-3013-CYL	3.0	13.0	4.0	1	Steel	G	eq. to M-5000-4153
TM2-3023-BC	3.0	23.0	16.0	2	Carbide	E	eq. to A-5003-1258
TM2-3040-BC	3.0	40.0	33.0	2	Carbide	E	

4.0 mm cylinder

<u>Part Number</u>	<u>Db</u>	<u>L1</u>	<u>L2</u>	<u>L3</u>	<u>Wt</u>	<u>Material</u>	<u>Type</u>	<u>Notes</u>
TM2-4020-B	4.0	20.0	15.0	10.0	2	Ruby	H	
TM2-4022-B	4.0	22.0	17.0	10.0	2	Ruby	H	eq. to A-5003-0073
TM2-4025-B	4.0	25.0	20.0	10.0	2	Ruby	H	

M2 Pointed Styli

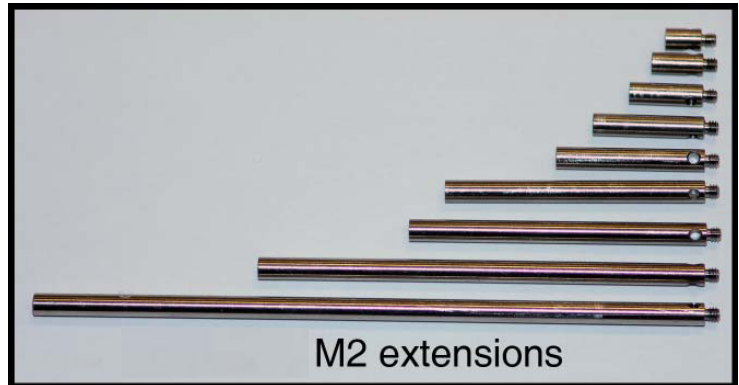
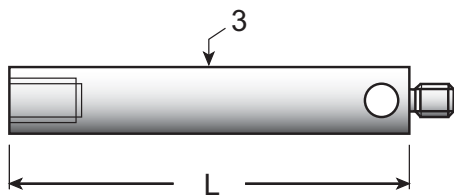
<u>Part Number</u>	<u>Description</u>	<u>Wt</u>
TM2-S30	M2 stylus, stainless steel, 30 degree point ("a")	
TM2-S60	M2 stylus, stainless steel, 60 degree point ("a")	1



M2 STYLI

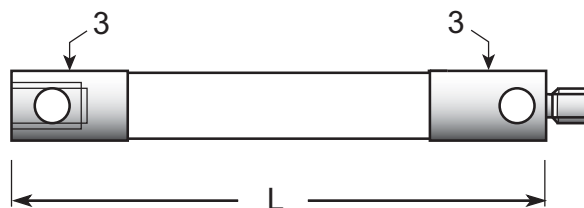
M2 Extensions - Stainless Steel

Part Number	D	L	Wt	Notes
VM2-5	3	5	1	eq. to M-5000-7634
VM2-7	3	7	1	
VM2-10	3	10	1	eq. to M-5000-3647
VM2-15	3	15	1	
VM2-20	3	20	1	eq. to M-5000-3648
VM2-25	3	25	1	
VM2-30	3	30	1	eq. to M-5000-4162
VM2-40	3	40	2	eq. to M-5000-7779
VM2-50	3	50	2	
VM2-60	3	60	2	
VM2-75	3	75	2	
VM2-90	3	90	2	
VM2-100	3	100	3	
VM2-110	3	110	3	

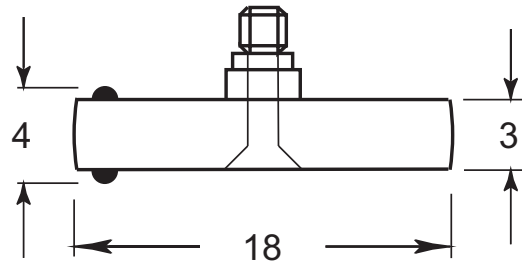


M2 Extensions - Graphite & Ceramic

Part Number	D	L	Wt	Materials	Notes
VM2-20-C	3	20	<1	ceramic / stainless	
VM2-30-C	3	30	1	ceramic / stainless	eq. to A-5003-0070
VM2-30-G	3	30	1	graphite / stainless	
VM2-40-C	3	40	1	ceramic / stainless	eq. to A-5003-0071
VM2-40-G	3	40	1	graphite / stainless	eq. to A-5003-2280
VM2-50-C	3	50	1	ceramic / stainless	eq. to A-5003-0072
VM2-50-G	3	50	1	graphite / stainless	eq. to A-5003-2281
VM2-60-C	3	60	1	ceramic / stainless	
VM2-70-G	3	70	1	graphite / stainless	eq. to A-5003-2282
VM2-90-G	3	90	1	graphite / stainless	eq. to A-5003-2283
VM2-100-G	3	100	1	graphite / stainless	



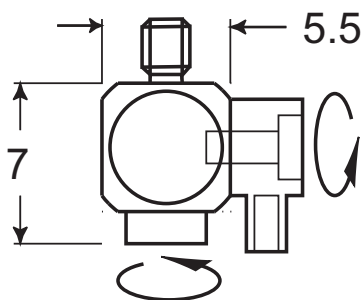
M2 STYLI



M2 Disk Probe

Hard anodized aluminum with stainless steel screw. 1 mm carbide balls on both sides of disk.

Part Number DSK-M2-180 **Wt** 2



M2 Stylus Knuckle

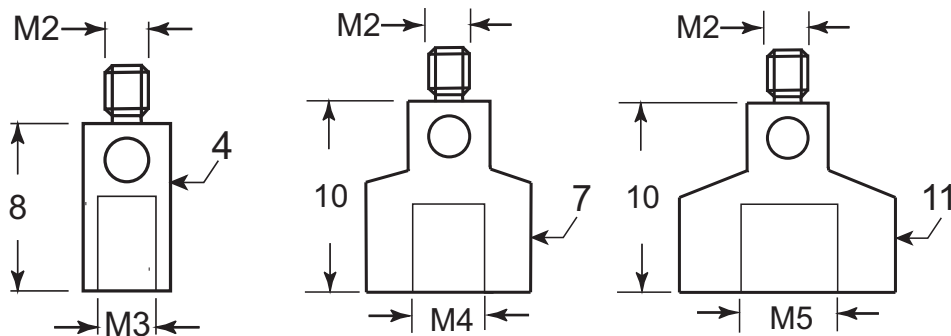
Adjust your stylus to any angle and lock. Stainless steel.

Part Number GM2-16 **Wt** 2

(eq. to A-5000-7534)

M2 STYLI

M2 Thread Adapters



<u>Part Number</u>	<u>OD thread</u>	<u>ID thread</u>	<u>L</u>	<u>D</u>	<u>W</u>	
RM2-M3 (eq. to A-5000-4164)	M2	M3	8	4	<1	
RM2-M4	M2	M4 x 0.5	10	7	2	
RM2-M4-DEA	M2	M4 x 0.7*	10	7	2	
		(*fits old DEA cmm styli with fine threads)				
RM2-M5	M2	M5	10	11	4	

M2 probe wrench PK-2

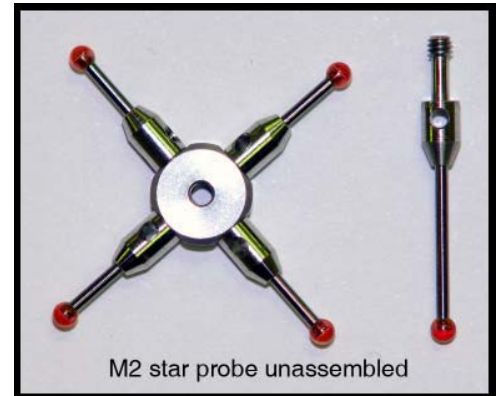
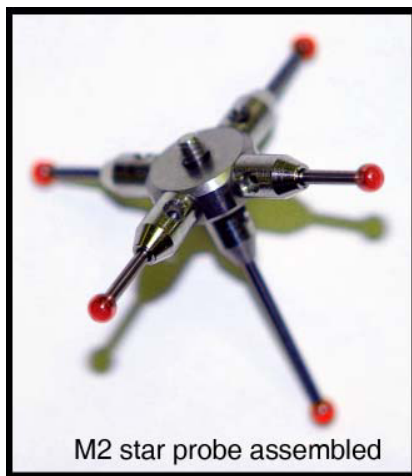
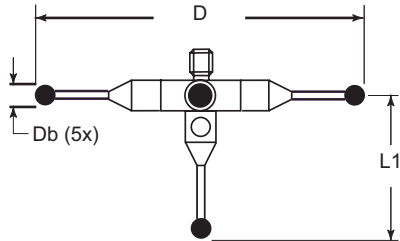


M2 Probe Wrench

Hardened and tempered tool steel with stainless steel handle. Lifetime guarantee against bending or breaking. Get two for tightening styli to extensions.

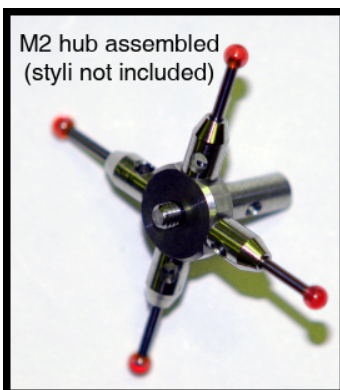
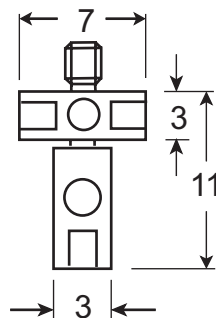
Part Number: PK-2

M2 STYLI



M2 Star Probes

Part Number	Db	L1	D	Wt	
QM2-2020	2.0	20	20	3	
(eq. to A-5000-7629)					
QM2-2030	2.0	20	30	4	
(eq. to A-5000-3626)					



Adjustable Hub for M2 Star Probes

Make your own M2 star probes with this 5-way adjustable hub. Stainless steel.

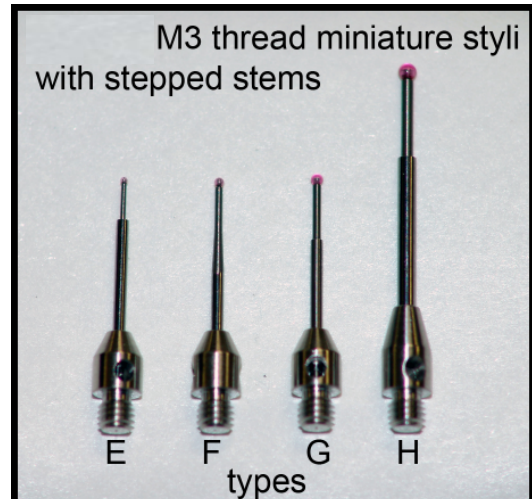
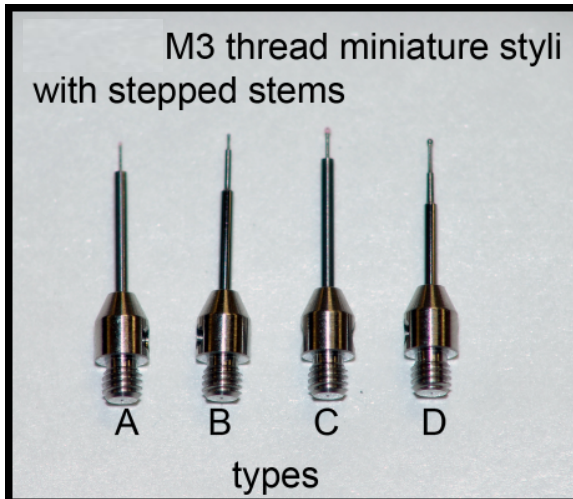
Part Number	Wt	
KM2-10	2	

M3 STYLI

M3 styli and accessories

M3 STYLI

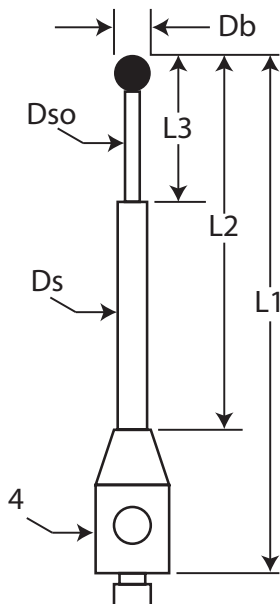
M3 Miniature Styli



TM3-0315-R TM3-0315-C TM3-0515-R TM3-0515-C TM3-0615 TM3-0815 TM3-1015 TM3-1525

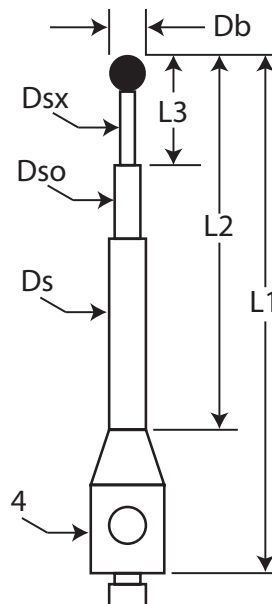
Types A, C, E, G, & H

Ruby ball



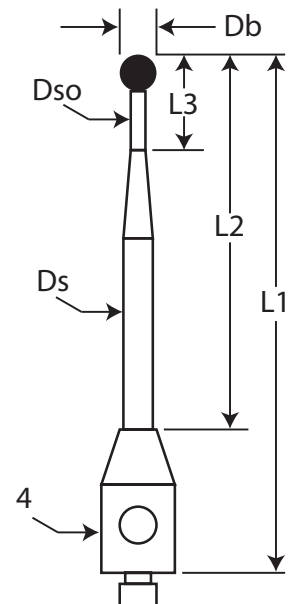
Types B & D

Carbide ball



Type F

Ruby ball



M3 STYLI

M3 Miniature Styli

M3 miniature styli with 0.3 mm and 0.5 mm balls are available with ruby or carbide balls. The carbide ball design is more robust than the ruby. While still fragile, the carbide ball design will usually absorb more shock than a ruby ball without breaking loose from the stem.

All M3 standard styli are guaranteed 100% compatible with any M3 probe system.

We'll help you select the best M3 miniature stylus for your application.

Part number suffixes:

“-R” = ruby ball “-C”= carbide ball “-SN” = silicon nitride ball

0.3 mm ruby or carbide balls with *stepped* shaft

<u>Part Number</u>	<u>Db</u>	<u>Ds</u>	<u>Dso</u>	<u>Dsx</u>	<u>L1</u>	<u>L2</u>	<u>L3</u>	<u>Wt</u>	<u>Type</u>	
TM3-0310-C	0.3	1.0	0.5	0.2	10.0	5.0	1.3	1	B	
TM3-0315-C	0.3	1.0	0.5	0.2	15.0	10.0	1.3	1	B	
TM3-0318-C	0.3	1.0	0.5	0.2	18.0	13.0	1.3	1	B	
TM3-0318-R	0.3	1.0	0.2	----	18.0	13.0	2.3	1	A	
TM3-0320-C	0.3	1.0	0.5	0.2	20.0	15.0	1.3	1	B	

0.5 mm ruby or carbide balls with *stepped* shaft

<u>Part Number</u>	<u>Db</u>	<u>Ds</u>	<u>Dso</u>	<u>Dsx</u>	<u>L1</u>	<u>L2</u>	<u>L3</u>	<u>Wt</u>	<u>Type</u>	
TM3-0510-C	0.5	1.0	0.3	----	10.0	5.0	----	1	B	
TM3-0515-C	0.5	1.0	0.6	0.3	15.0	10.0	2.5	1	B	
TM3-0515-R	0.5	1.0	0.3	----	15.0	10.0	----	1	A	
TM3-0518-C	0.5	1.0	0.6	0.3	18.0	13.0	2.5	1	B	
TM3-0518-R	0.5	1.0	0.3	----	18.0	13.0	----	1	A	
TM3-0519-C	0.5	1.0	0.6	0.3	19.0	14.0	2.5	1	B	
TM3-0521-02	0.5	4.0	0.4	----	21.25	18.0	5.0	1	F	

*All stainless steel body with ruby ball. Equivalent to Renishaw part no. A-5000-7632.

0.6 mm ruby or carbide balls with *stepped* shaft

<u>Part Number</u>	<u>Db</u>	<u>Ds</u>	<u>Dso</u>	<u>L1</u>	<u>L2</u>	<u>L3</u>	<u>Wt</u>	<u>Type</u>	
TM3-0610	0.6	1.0	0.4	10.0	5.0	4.0	1	A	
TM3-0611	0.6	1.0	0.4	11.0	6.0	4.0	1	A	
TM3-0615	0.6	1.0	0.4	15.0	10.0	4.0	1	A	
TM3-0618	0.6	1.0	0.4	18.0	13.0	4.0	1	A	
TM3-0620	0.6	1.0	0.4	20.0	15.0	4.0	1	A	

0.8 mm ruby ball with *tapered* shaft

<u>Part Number</u>	<u>Db</u>	<u>Ds</u>	<u>Dso</u>	<u>L1</u>	<u>L2</u>	<u>L3</u>	<u>Wt</u>	<u>Type</u>	
TM3-0812	0.8	1.0	0.6	12.0	7.0	4.0	1	C	
TM3-0815	0.8	1.0	0.6	15.0	10.0	4.0	1	C	
TM3-0820	0.8	1.0	0.6	20.0	15.0	4.0	1	C	
TM3-0830	0.8	1.0	0.6	30.0	22.0	4.0	1	C	

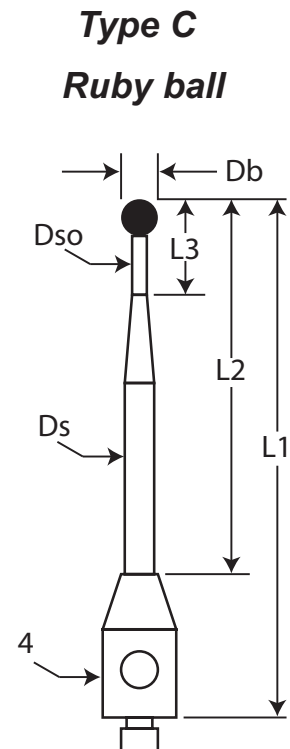
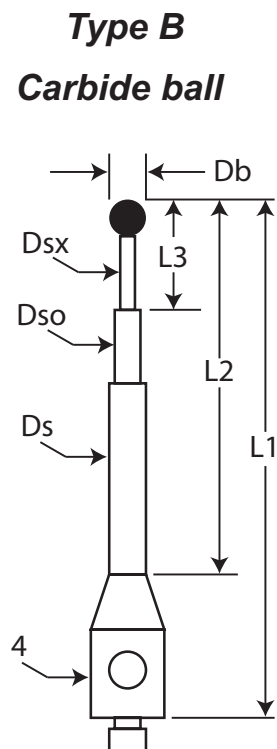
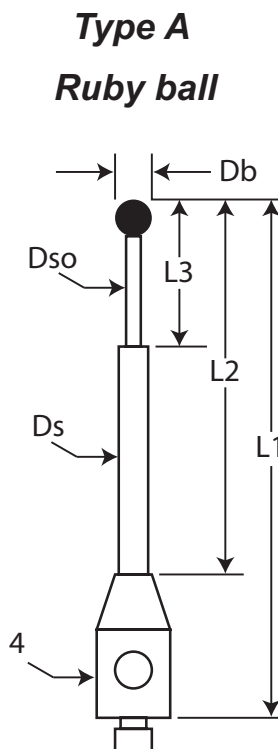
continued next page...

M3 STYLI

M3 Miniature Styli

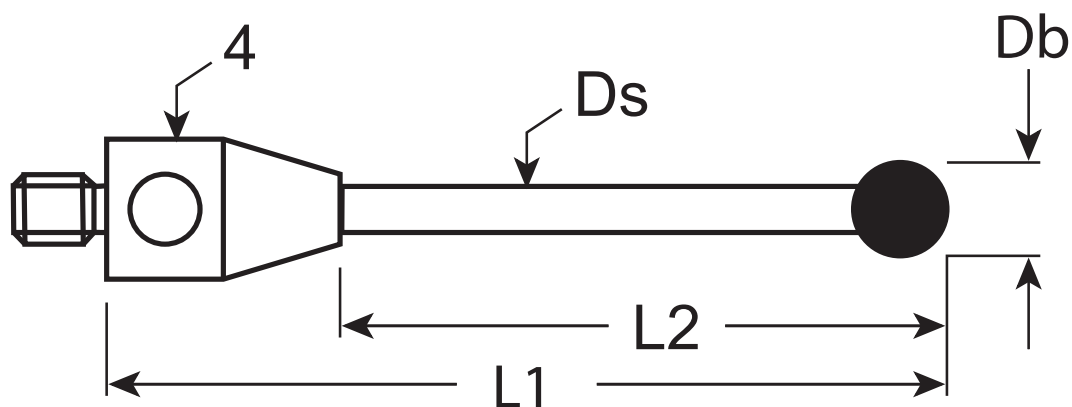
1.0 mm ruby or silicon nitride ball with *stepped* shaft

Part Number	Db	Ds	Dso	L1	L2	L3	Wt	Type	Notes
TM3-1010	1.0	1.0	0.7	10	5.0	5.0	1	A	
TM3-1015	1.0	1.0	0.7	15.0	10.0	5.0	1	A	
TM3-1015-SN	1.0	1.0	0.7	15.0	10.0	5.0	1	A	
TM3-1020	1.0	1.0	0.7	20.0	15.0	5.0	1	A	
TM3-1020-SN	1.0	1.0	0.7	20.0	15.0	5.0	1	A	
TM3-1021-S	1.0	1.0	0.7	21.5	16.0	5.0	1	C	eq. to A-5000-3551
TM3-1022	1.0	1.0	0.7	22.0	17.0	5.0	1	A	
TM3-1022-13	1.0	1.0	0.7	22.0	9.0	5.0	1	A	
TM3-1025	1.0	1.0	0.7	25.0	18.0	5.0	1	A	
TM3-1025-SN	1.0	1.0	0.7	25.0	18.0	5.0	1	A	
TM3-1030	1.0	1.0	0.7	30.0	22.0	5.0	1	A	
TM3-1040-SN	1.0	1.5	0.7	40.0	32.0	5.0	2	A	
TM3-1041-SN	1.0	1.5	0.7	41.0	33.0	5.0	2	A	



M3 STYLI

M3 Standard Styli

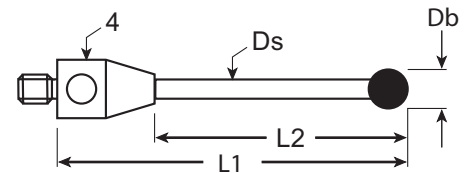


M3 standard styli are available in hundreds of sizes. Ball diameters range from 1.0 mm (.039") to 8.0 mm (.315"). Ball materials are ruby and silicon nitride. Shaft materials include carbide, ceramic, graphite, and stainless steel. Bases are stainless steel.

All M3 standard styli are guaranteed 100% compatible with any M3 probe system.

We'll help you select the best M3 stylus for your application.

M3 STYLI



M3 Standard Styli

1.0 mm ruby or silicon nitride ball

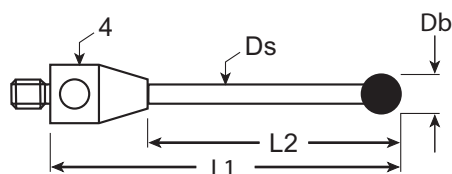
Part Number	Db	L1	L2	Ds	Wt	Notes
TM3-1010-DS7	1.0	10.0	5.0	0.7	1	
TM3-1020-DS7	1.0	20.0	15.0	0.7	1	
TM3-1020-DS7-SN	1.0	20.0	15.0	0.7	1	silicon nitride ball
TM3-1027-DS7-SN	1.0	27.0	19.0	0.7	1	silicon nitride ball

1.5 mm ruby or silicon nitride ball

Part Number	Db	L1	L2	Ds	Wt	Notes
TM3-1520	1.5	20.0	15.0	1.0	1	
TM3-1520-SN	1.5	20.0	15.0	1.0	1	
TM3-1522	1.5	21.75	13.75	1.0	1	eq. to A-5003-0050
TM3-1530	1.5	30.0	22.0	1.0	1	
TM3-1530-SN	1.5	30.0	22.0	1.0	1	
TM3-1530-DS1	1.5	30.0	22.0	1.0	1	
TM3-1531-DS1	1.5	30.75	22.75	1.0	1	eq. to A-5003-0051

2.0 mm ruby or silicon nitride ball

Part Number	Db	L1	L2	Ds	Wt	Notes
TM3-2010	2.0	10	5	1.0	1	
TM3-2014-SN	2.0	14	9	1.0	1	silicon nitride ball
TM3-2015	2.0	15	10	1.0	1	
TM3-2019	2.0	19	14	1.0	1	
TM3-2020	2.0	20	15	1.0	1	
TM3-2020-SN	2.0	20	15	1.0	1	silicon nitride ball
TM3-2021	2.0	21	16	1.0	1	
TM3-2021.5	2.0	21.5	16.5	1.0	1	
TM3-2021-6	2.0	21	6	1.0	1	
TM3-2021-SN	2.0	21	16	1.0	1	silicon nitride ball
TM3-2022	2.0	22	17	1.0	1	
TM3-2022-S	2.0	22	10	1.0	1	eq. to A-5000-3552
TM3-2022-S-SN	2.0	22	10	1.0	1	eq. to A-5003-5723
TM3-2025	2.0	25	18	1.0	1	
TM3-2025-SN	2.0	25	18	1.0	1	silicon nitride ball
TM3-2026	2.0	26	19	1.0	1	
TM3-2026-SN	2.0	26	19	1.0	1	silicon nitride ball
TM3-2030	2.0	30	23	1.5	1	
TM3-2030-SN	2.0	30	23	1.5	1	silicon nitride ball
TM3-2031	2.0	31	24	1.5	1	eq. to A-5003-0052
TM3-2031-SN	2.0	31	24	1.5	1	eq. to A-5003-5724
TM3-2035	2.0	35	28	1.5	1	
TM3-2040	2.0	40	33	1.5	1	
TM3-2040-SN	2.0	40	33	1.5	1	silicon nitride ball
TM3-2041	2.0	41	34	1.5	1	eq. to A-5003-0053
TM3-2050	2.0	50	43	1.5	1	
TM3-2051	2.0	51	44	1.5	1	
TM3-2065-SN	2.0	65	58	1.5	1	silicon nitride ball
TM3-2070	2.0	70	63	1.5	1	
TM3-2076.2	2.0	76.2	69.2	1.5	1	
TM3-20100	2.0	100	93	1.5	2	



M3 STYLI

M3 Standard Styli

2.5 mm ruby or silicon nitride ball

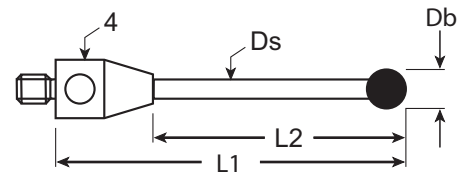
<u>Part Number</u>	<u>Db</u>	<u>L1</u>	<u>L2</u>	<u>Ds</u>	<u>Wt</u>	<u>Notes</u>
TM3-2520	2.5	20	15	1.5	1	
TM3-2522	2.5	22.25	15.25	1.5	1	eq. to A-5003-0054
TM3-2530	2.5	30	23	1.5	1	
TM3-2531	2.5	31.25	24.25	1.5	1	eq. to A-5003-0055
TM3-2531-SN	2.5	31	24	1.5	1	silicon nitride ball
TM3-2540	2.5	40	33	1.5	1	
TM3-2540-SN	2.5	40	33	1.5	1	silicon nitride ball
TM3-2541	2.5	41.25	34.25	1.5	1	eq. to A-5003-0056
TM3-2550	2.5	50	43	1.5	1	
TM3-2572	2.5	72	65	1.5	1	

3.0 mm ruby or silicon nitride balls

<u>Part Number</u>	<u>Db</u>	<u>L1</u>	<u>L2</u>	<u>Ds</u>	<u>Wt</u>	<u>Notes</u>
TM3-3015	3.0	15	10	1.5	1	
TM3-3016	3.0	16	11	1.5	1	
TM3-3020	3.0	20	15	1.5	1	
TM3-3020-SN	3.0	20	15	1.5	1	
TM3-3022-G	3.0	22	17	1.5	1	graphite shaft
TM3-3022-G-SN	3.0	22	17	1.5	1	graphite shaft & SiN ball
TM3-3022-S	3.0	22.5	13	1.5	2	eq. to A-5000-3553
TM3-3023	3.0	23	18	1.5	2	
TM3-3025	3.0	25	18	1.5	2	
TM3-3025-SN	3.0	25	18	1.5	2	silicon nitride ball
TM3-3030	3.0	30	23	2.0	2	
TM3-3030-C-SN	3.0	30	23	2.0	1	ceramic shaft & SiN ball
TM3-3031	3.0	31.5	24.5	2.0	2	eq. to A-5003-0057
TM3-3035	3.0	35	28	2.0	2	
TM3-3038	3.0	38	31	2.0	2	
TM3-3040	3.0	40	33	2.0	2	
TM3-3040-C	3.0	40	33	2.0	1	ceramic shaft
TM3-3040-SN	3.0	40	33	2.0	2	silicon nitride ball
TM3-3041	3.0	41.5	34.5	2.0	3	eq. to A-5003-0058
TM3-3045-SN	3.0	45	38	2.0	3	silicon nitride ball
TM3-3050	3.0	50	43	2.0	3	
TM3-3050-C	3.0	50	43	2.0	2	ceramic shaft
TM3-3050-SN	3.0	50	43	2.0	3	silicon nitride ball
TM3-3051	3.0	51.5	44.5	2.0	3	eq. to A-5003-0059
TM3-3051-C	3.0	51.5	44.5	2.0	2	eq. to A-5003-0067
TM3-3051-C-SN	3.0	51.5	44.5	2.0	2	ceramic shaft & SiN ball
TM3-3058	3.0	58	51	2.0	3	
TM3-3060	3.0	60	53	2.0	3	
TM3-3070	3.0	70	63	2.0	4	
TM3-3085	3.0	85	78	2.0	4	
TM3-3085-SN	3.0	85	78	2.0	4	silicon nitride ball
TM3-30100	3.0	100	93	2.0	5	
TM3-30107-C	3.0	107	100	2.0	2	ceramic shaft

continued next page...

M3 STYLI



M3 Standard Styli

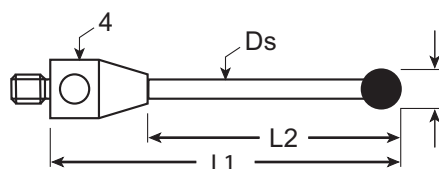
4.0 mm ruby or silicon nitride balls

Part Number	Db	L1	L2	Ds	Wt	Notes
TM3-4020	4.0	20	15	2.0	1	
TM3-4022	4.0	22	17	2.0	1	
TM3-4023-G-SN	4.0	23	18	2.0	1	graphite shaft & SiN ball
TM3-4023-S	4.0	23	14	2.5	1	eq. to A-5000-7606
TM3-4023-S-SN	4.0	23	14	2.5	1	eq. to A-5003-5061
TM3-4030	4.0	30	23	2.0	2	
TM3-4030-G	4.0	30	23	2.0	1	graphite shaft
TM3-4032	4.0	32	25	2.0	2	
TM3-4032-C	4.0	32	25	2.0	1	ceramic shaft
TM3-4032-G	4.0	32	25	2.0	1	graphite shaft
TM3-4033-G-SN	4.0	33	26	2.0	1	graphite shaft & SiN ball
TM3-4033-S	4.0	33	24	2.5	4	eq. to A-5000-3554
TM3-4033-SN	4.0	33	26	2.0	4	silicon nitride ball
TM3-4040	4.0	40	33	2.0	3	
TM3-4042	4.0	42	35	2.0	3	eq. to A-5003-0060
TM3-4042-G-SN	4.0	42	35	2.0	1	graphite shaft & SiN ball
TM3-4042-SN	4.0	42	35	2.0	4	silicon nitride ball
TM3-4043	4.0	43	36	2.0	3	
TM3-4050	4.0	50	43	2.0	4	
TM3-4050-C	4.0	50	43	2.0	2	ceramic shaft
TM3-4052	4.0	52	45	2.0	3	eq. to A-5003-0061
TM3-4052-C	4.0	52	45	2.0	2	eq. to A-5003-0068
TM3-4052-C-SN	4.0	52	45	2.0	2	eq. to A-5003-5725
TM3-4053	4.0	53	46	2.0	5	
TM3-4053-C-SN	4.0	53	46	2.0	2	ceramic shaft & SiN ball
TM3-4070	4.0	70	63	2.0	5	
TM3-40100	4.0	100	93	2.0	6	
TM3-40100-C	4.0	100	93	2.0	2	ceramic shaft
TM3-40107	4.0	107	100	2.0	6	
TM3-40120-C	4.0	120	113	2.0	2	ceramic shaft
TM3-40120-G	4.0	120	113	2.0	2	graphite shaft

5.0 mm ruby or silicon nitride balls

Part Number	Db	L1	L2	Ds	Wt	Notes
TM3-5020	5.0	20	13	2.5	2	
TM3-5023-S	5.0	23.5	16.5	2.5	2	eq. to A-5000-7630
TM3-5025-G	5.0	25	18	2.5	1	graphite shaft
TM3-5030	5.0	30	23	2.5	3	
TM3-5030-C	5.0	30	23	2.5	1	ceramic shaft
TM3-5033-S	5.0	33.5	26.5	3.5	3	eq. to A-5000-7648
TM3-5040	5.0	40	33	2.5	4	
TM3-5040-G	5.0	40	33	2.5	1	graphite shaft
TM3-5042	5.0	42.5	35.5	2.5	4	eq. to A-5003-0062
TM3-5050	5.0	50	43	2.5	5	
TM3-5050-C	5.0	50	43	2.5	2	ceramic shaft
TM3-5050-G	5.0	50	43	2.5	2	graphite shaft

continued next page...



M3 STYLI

M3 Standard Styli

5.0 mm ruby or silicon nitride balls (continued)

<u>Part Number</u>	<u>Db</u>	<u>L1</u>	<u>L2</u>	<u>Ds</u>	<u>Wt</u>	<u>Notes</u>
TM3-5050-SN	5.0	50	43	2.5	5	silicon nitride ball
TM3-5052	5.0	52.5	45.5	2.5	5	eq. to A-5003-0063
TM3-5052-C	5.0	52	45	2.5	2	eq. to A-5003-0069
TM3-5052.5-C	5.0	52.5	45.5	2.5	2	ceramic shaft
TM3-5052.5-G	5.0	52.5	45.5	2.5	2	graphite shaft
TM3-5052.5-G-SN	5.0	52.5	45.5	2.5	2	graphite shaft & SiN ball
TM3-5052.5-SN	5.0	52.5	45.5	2.5	5	silicon nitride ball
TM3-5070	5.0	70	63	2.5	6	
TM3-5089	5.0	89	82	2.5	6	
TM3-5090-C	5.0	90	83	2.5	2	ceramic shaft
TM3-50100	5.0	100	93	2.5	7	
TM3-50100-SN	5.0	100	93	2.5	7	silicon nitride ball

6.0 mm ruby or silicone nitride balls

<u>Part Number</u>	<u>Db</u>	<u>L1</u>	<u>L2</u>	<u>Ds</u>	<u>Wt</u>	<u>Notes</u>
TM3-6020	6.0	20	13	2.5	2	
TM3-6020-G-SN	6.0	20	13	2.5	2	
TM3-6050	6.0	50	43	2.5	5	
TM3-6050-G	6.0	50	43	2.5	2	graphite shaft
TM3-6060	6.0	60	53	2.5	6	
TM3-6075-C	6.0	75	68	3.5	3	ceramic shaft
TM3-6078-G	6.0	78	68	4.0	3	eq. to A-5003-4860
TM3-6078-G-SN	6.0	78	68	4.0	3	eq. to A-5003-5726
TM3-60100-C	6.0	100	93	4.0	4	ceramic shaft
TM3-60103-G	6.0	103	96	4.0	3	eq. to A-5003-4861
TM3-60103-G-SN	6.0	103	96	4.0	3	eq. to A-5003-5727
TM3-60108-G	6.0	108	101	4.0	3	graphite shaft
TM3-60120-SN	6.0	120	113	3.5	8	silicon nitride ball

7.0 mm ruby balls

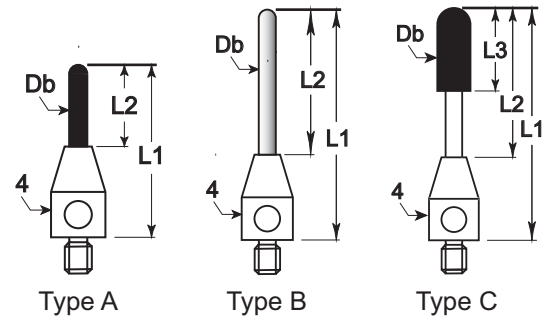
<u>Part Number</u>	<u>Db</u>	<u>L1</u>	<u>L2</u>	<u>Ds</u>	<u>Wt</u>	<u>Notes</u>
TM3-7030	7.0	30	23	3.0	3	
TM3-7050	7.0	50	43	3.0	3	
TM3-7075-G	7.0	75	68	3.5	3	
TM3-70150-C	7.0	150	143	3.5	3	ceramic shaft

8 mm ruby or silicon nitride balls

<u>Part Number</u>	<u>Db</u>	<u>L1</u>	<u>L2</u>	<u>Ds</u>	<u>Wt</u>	<u>Notes</u>
TM3-8013	8.0	13	8	4.0	3	
TM3-8015-SN	8.0	13	8	4.0	3	silicon nitride ball
TM3-8020	8.0	20	12	4.0	4	
TM3-8040	8.0	40	32	4.0	7	
TM3-8042-G	8.0	42	34	4.0	2	graphite shaft
TM3-8050	8.0	50	42	4.0	9	
TM3-8050-C-SN	8.0	50	42	4.0	5	ceramic shaft & SiN ball
TM3-8079-G	8.0	79	71	4.0	3	eq. to A-5003-4862
TM3-8079-G-SN	8.0	79	71	4.0	3	graphite shaft & SiN ball
TM3-80104-G	8.0	104	96	4.0	3	eq. to A-5003-4863
TM3-80125-G	8.0	125	117	4.0	4	graphite shaft

M3 STYLI

M3 Cylinder Styli



0.6 mm cylinder

<u>Part Number</u>	<u>Db</u>	<u>L1</u>	<u>L2</u>	<u>Wt</u>	<u>Material</u>	<u>Type</u>	
TM3-0608-B	0.6	8.0	3.0	1	Ruby	A	

1.0 mm cylinder

<u>Part Number</u>	<u>Db</u>	<u>L1</u>	<u>L2</u>	<u>Wt</u>	<u>Material</u>	<u>Type</u>	
TM3-1014-B	1.0	14.0	9.0	1	Ruby	A	
TM3-1014-BC	1.0	14.0	9.0	1	Carbide	B	
TM2-1032.4-BC	1.0	32.4	25.4	1	Carbide	B	

1.5 mm cylinder

<u>Part Number</u>	<u>Db</u>	<u>L1</u>	<u>L2</u>	<u>Wt</u>	<u>Material</u>	<u>Type</u>	
TM3-1514-B	1.5	14.0	9.0	1	Ruby	A	
TM3-1515-BC	1.5	15.0	10.0	1	Carbide	B	
TM3-1540-BC	1.5	40.0	35.0	1	Carbide	B	

2.0 mm cylinder

<u>Part Number</u>	<u>Db</u>	<u>L1</u>	<u>L2</u>	<u>L3</u>	<u>Wt</u>	<u>Material</u>	<u>Type</u>	
TM3-2020-B	2.0	20.0	15.0	7.2	1	Ruby	C	
TM3-2025-BC	2.0	25.0	20.0	---	1	Carbide	B	
TM2-2030-B	2.0	30.0	25.0	7.2	1	Ruby	C	
TM2-2040-BC	2.0	40.0	35.0	---	1	Carbide	B	
TM2-2075-BC	2.0	75.0	68.0	---	2	Carbide	B	

3.0 mm cylinder

<u>Part Number</u>	<u>Db</u>	<u>L1</u>	<u>L2</u>	<u>Wt</u>	<u>Material</u>	<u>Type</u>	
TM3-3013-CYL	3.0	13.0	4.0	1	Steel	C	
TM3-3040-BC	3.0	40.0	33.0	2	Carbide	B	
TM3-30100-BC	3.0	100.0	93.0	4	Carbide	B	

4.0 mm cylinder

<u>Part Number</u>	<u>Db</u>	<u>L1</u>	<u>L2</u>	<u>L3</u>	<u>Wt</u>	<u>Material</u>	<u>Type</u>	
TM3-4020-B	4.0	20.0	15.0	10.0	2	Ruby	C	
TM3-4030-B	4.0	30.0	25.0	10.0	2	Ruby	C	
TM3-4040-B	4.0	40.0	35.0	10.0	2	Ruby	C	

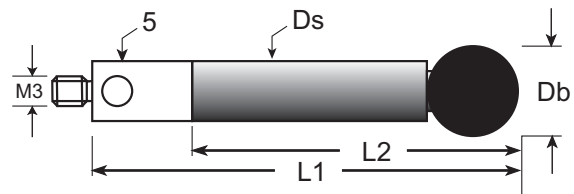
M3 STYLI

M3 Therm-X™ Styli



Therm-X™ styli are designed for maximum stiffness, lightest weight, and superior resistance to temperature changes. Therm-X™ styli have titanium bases, carbon fiber shafts, and ruby or silicon nitride balls. Therm-X™ styli...when only the best will do.

***Titanium bases
Carbon fiber shafts
Superior thermal resistance***



Part Number	Db	L1	L2	Ds	Wt	Notes
TM3-3033-TX	3.0	33.0	24.0	2.0	1	eq. to 626103.0300.033
TM3-3040-TX	3.0	40.0	31.0	2.0	1	eq. to 626103.0301.040
TM3-3050-TX	3.0	50.0	41.0	2.0	1	eq. to 626103.0300.050
TM3-4025-TX	4.0	25.0	16.0	2.0	1	
TM3-4052-TX	4.0	52.0	43.0	2.5	1	
TM3-4052-TX-SN	4.0	52.0	43.0	2.5	1	
TM3-4075-TX	4.0	75.0	66.0	2.5	1	
TM3-4090-TX	4.0	90.0	81.0	3.0	2	
TM3-4090-TX-SN	4.0	90.0	81.0	3.0	2	
TM3-5030-TX	5.0	30.0	21.0	3.5	2	eq. to 626103.0500.030
TM3-5050-TX	5.0	50.0	41.0	3.5	2	eq. to 626103.0501.050
TM3-5075-TX	5.0	75.0	66.0	3.5	2	eq. to 626103.0501.075
TM3-5075-TX-SN	5.0	75.0	66.0	3.5	2	eq. to 626103.0500.075
TM3-50100-TX	5.0	100.0	91.0	3.5	2	
TM3-60100-TX	6.0	100.0	91.0	3.5	2	eq. to 626103.0600.100
TM3-60103-TX	6.0	103.0	94.0	3.5	2	
TM3-80125-TX	8.0	125.0	116.0	5.0	3	eq. to 626103.0800.125

SN = silicon nitride ball

M3 STYL

M3 Therm-X™ Extensions



Therm-X™ extensions are designed for maximum stiffness, lightest weight, and superior resistance to temperature changes. Therm-X™ extensions have titanium end fittings and carbon fiber shafts. Therm-X™ extensions..when only the best will do.

*Titanium end fittings
Carbon fiber shafts
Superior thermal resistance*



<u>Part Number</u>	<u>L</u>	<u>Wt</u>
VM3-50-TX	50	2
VM3-75-TX	75	2
VM3-100-TX	100	3

Notes
eq. to 626103.0300.033

M3 Ultra Light Star Probes

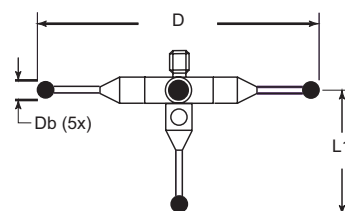
Carbide stems with stainless steel center hub. Radial orientation is fully adjustable.

<u>Part Number</u>	<u>Db</u>	<u>L1</u>	<u>D</u>	<u>Wt</u>
STR3-1060-TX	1.0	27.0	60.0	4
STR3-1060-TX-SN	1.0	27.0	60.0	4
STR3-1560-TX	1.5	27.0	60.0	4
STR3-1560-TX-SN	1.5	27.0	60.0	4
STR3-2060-TX	2.0	27.0	60.0	4
STR3-2060-TX-SN	2.0	27.0	60.0	4
STR3-3040-TX	3.0	27.0	40.0	5
STR3-3040-TX-SN	3.0	27.0	40.0	5

SN = silicon nitride ball

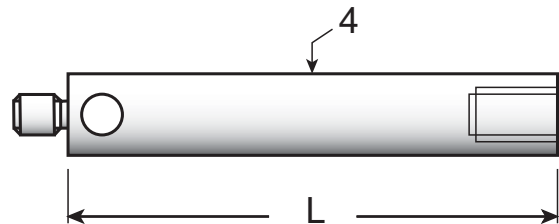
Notes

silicon nitride balls



M3 STYLI

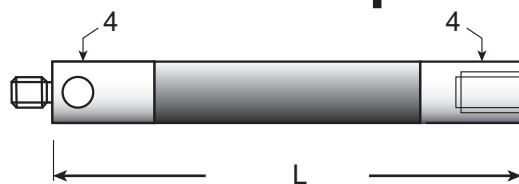
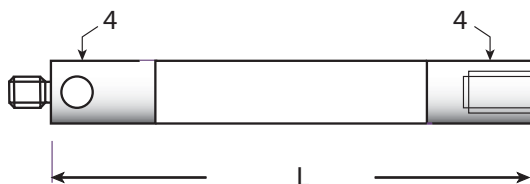
M3 Extensions - Stainless Steel



Part Number	L	Wt	Notes
VM3-5.6	5.6	1	
VM3-10	10	2	<i>eq. to M-5000-7633</i>
VM3-15	15	3	
VM3-20	20	3	<i>eq. to M-5000-3592</i>
VM3-25	25	3	
VM3-28	28	4	
VM3-30	30	4	
VM3-35	35	4	<i>eq. to M-5000-3593</i>

Part Number	L	Wt	
VM3-40	40	5	
VM3-50	50	5	
VM3-80	80	6	
VM3-100	100	7	
VM3-127	127	8	
VM3-130	130	8	
VM3-150	150	9	
VM3-200	200	11	

M3 Extensions - Ceramic & Graphite



Part Number	L	Wt	
VM3-20-C	20	<1	
VM3-20-G	20	<1	
VM3-30-C	30	1	
VM3-30-G	30	1	
VM3-35-C	40	1	
VM3-50-C	50	2	<i>eq. to A-5003-0075</i>
VM3-50-G	50	2	
VM3-75-G	75	3	<i>eq. to A-5003-4864</i>
VM3-100-C	100	1	
VM3-100-G	100	3	<i>eq. to A-5003-4865</i>

C = ceramic G = graphite

All have stainless steel M3 end fittings.

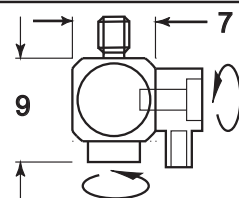
M3 STYLI



M3 Stylus Knuckle

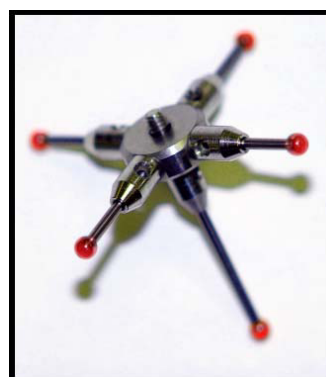
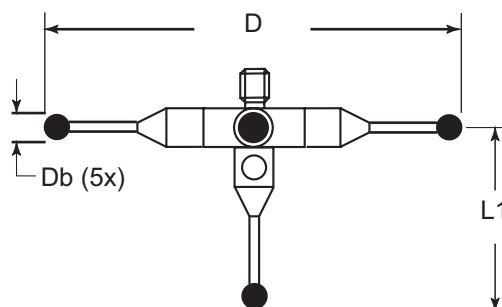
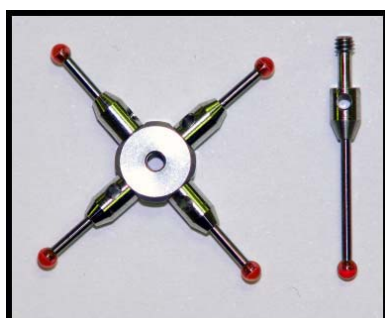
Adjust M3 stylus to any angle and lock.
Stainless steel. Includes 1.5 mm hex wrench.

<u>Part Number</u>	<u>Wt</u>	<u>Notes</u>
GM3-20	2	eq. to A-5000-7616



M3 Star Styli

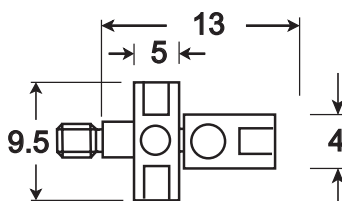
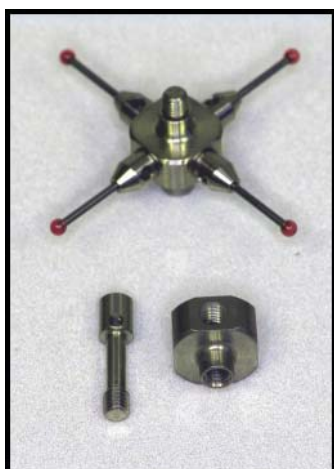
<u>Part Number</u>	<u>Db</u>	<u>L1</u>	<u>D</u>	<u>Wt</u>	<u>Notes</u>
STR3-2030	2.0	20	33	3	eq. to A-5003-0076
STR3-2050	2.0	30	55	5	eq. to A-5003-0077



Hub for M3 Star Styli

Make your own star probe with this 5-way hub.
Adjust your star probe to any radial angle, and lock.
Two pieces. Stainless steel.

<u>Part Number</u>	<u>Wt</u>	<u>Notes</u>
KM3-13	2	eq. to A-5000-7610



M3 STYLI

Probe Wrench for M3 Styli

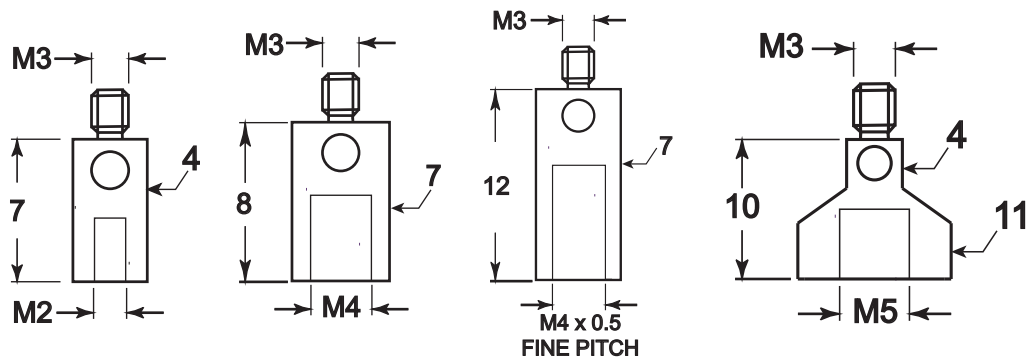
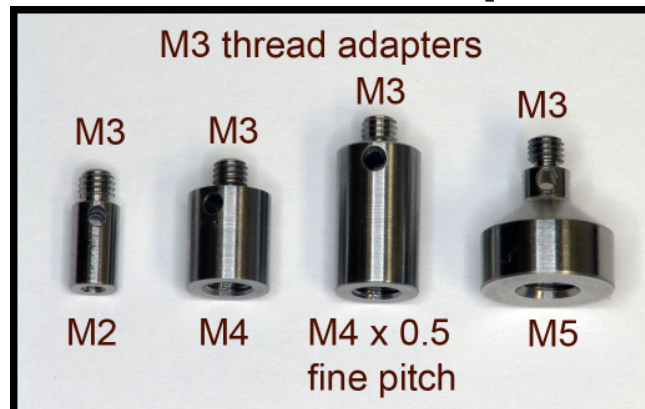
Probe Wrench

Hardened and tempered tool steel with stainless steel handle. Lifetime guarantee against bending or breaking. Get two for tightening styli to extensions.

Part Number: PK-3



M3 Thread Adapters



Part Number	OD thread	ID thread	L	D	W	
RM3-M2*	M3	M2	7	4	<1	
(*equivalent to M-5000-4163)						
RM3-M4	M3	M4 x 0.7	8	7	2	
RM3-M4-05	M3	M4 x 0.5*	12	7	2	
RM3-M5	M3	M5	10	11	4	

**Note: Most M4 styli have coarse threads, but some older DEA M4 CMM styli have fine threads. Please call us if you're unsure of your M4 stylus thread size.*

Calibration Spheres



Individual Calibration Spheres

Individual Calibration Spheres

Calibration spheres, also known as master balls, are used to calibrate individual styli prior to use on the CMM. In general, large spheres are useful for large diameter styli, and small spheres for small diameter styli. Whatever the diameter, they are always the highest quality.

<u>Part Number</u>	<u>Diameter</u>	<u>Ball Material</u>	_____
CAL-DK5	5.0 mm	ruby	
CAL-DK10	10.0 mm	ruby	
CAL-DK12	12.0 mm	ruby	
CAL-DK14	14.0 mm	ceramic	
CAL-DK15	15.0 mm	ceramic	
CAL-DK20	20.0 mm	ceramic	
CAL-DK25	25.0 mm	ceramic	
CAL-DK30	30.0 mm	ceramic	

Calibration spheres are Grade 5, meaning 0.000005" maximum deviation from spherical form. **Certification by a standards laboratory is additional cost, and must be ordered at the same time as the sphere.** See [Lab Certifications for Calibration Spheres](#) (right).



Sphere, Mounting Base, and M12 Screw

Mounting Base & M12 Screw

Our exclusive design permits quick exchange of individual calibration spheres. Simply unscrew one sphere, and screw in another. Stainless steel. Includes stainless M12 cap screw for mounting to CMM table.

<u>Part Number</u>	<u>Material</u>	_____
CAL-DKMB	Stainless steel	

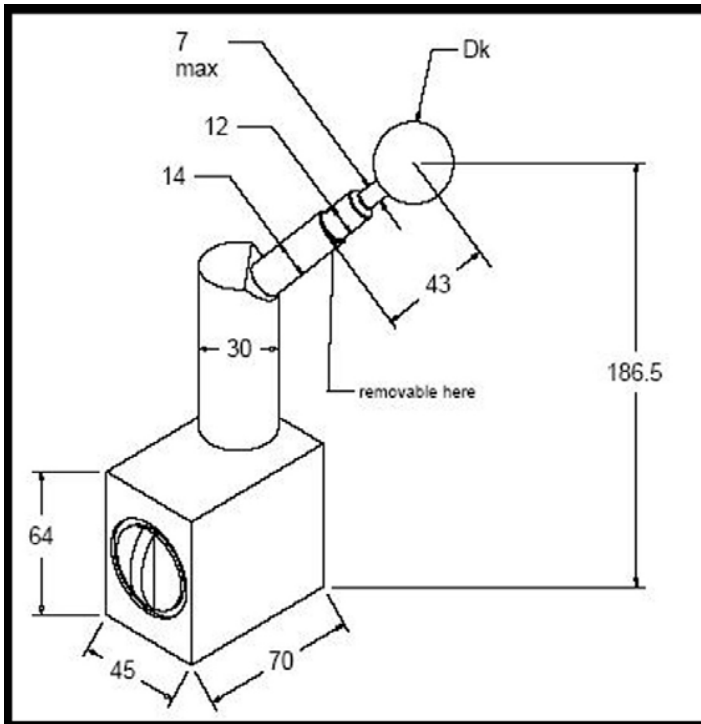


Lab Certifications for Calibration Spheres

Any diameter. Must be ordered at the same time as the sphere.

<u>Part Number</u>	<u>Ball Dia</u>	_____
CERT-DK	Any	

Magnetic Base for Calibration Spheres



Magnetic Base for Calibration Spheres

This magnetic base is designed to fit Zeiss CMM calibration sphere mounting plates. The sphere is positioned directly above a threaded insert in the CMM table for correct error map calculations.

Unlike the OEM design, which forces you to purchase a different base with each sphere diameter, our exclusive design lets you change spheres at will. The magnetic base remains on the CMM. You save money by ordering just the spheres you need, not more magnetic bases.

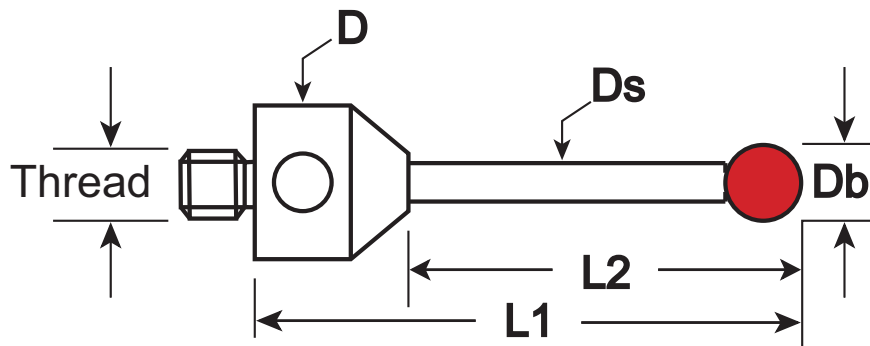
Regardless of the sphere diameter, the distance between the CMM table and the sphere center remains a constant 186.5 mm. This maintains correct positioning of your CMM's error map.

Part Number _____
MAG-70

Calibration spheres are not included. You'll find them listed under "Individual Calibration Spheres" on page 20.

DESIGN YOUR OWN STANDARD PROBE

- ☒ PHOTOCOPY THIS PAGE
☒ FILL IN THE BLANKS



Db	Ds	L1	L2	D	Thread	Quantity

Your Name _____ Phone _____

Company _____ Fax _____

Ball material: ☐ ruby ☐ silicon nitride ☐ ceramic ☐ carbide ☐ steel

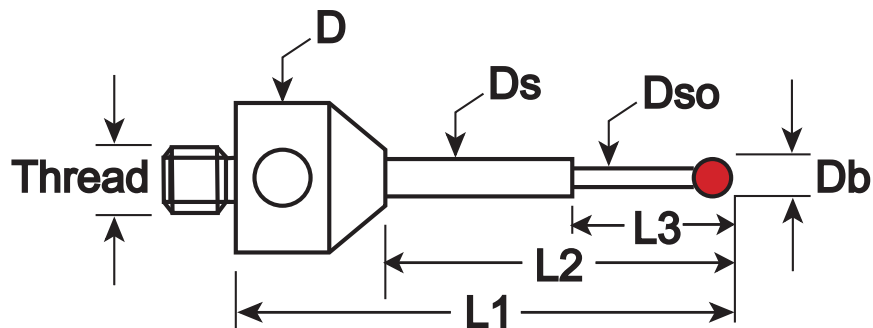
Stem material: ☐ carbide ☐ ceramic ☐ graphite ☐ steel ☐ other _____

Base material: ☐ stainless steel ☐ aluminum ☐ titanium ☐ other _____

Comments / special requirements _____

DESIGN YOUR OWN MINIATURE PROBE

- ☒ PHOTOCOPY THIS PAGE
☒ FILL IN THE BLANKS



Db	Dso	Ds	D	L1	L2	L3	Thread	Quantity

Your Name _____ Phone _____

Company _____ Fax _____

Ball material: ☐ ruby ☐ silicon nitride ☐ ceramic ☐ carbide ☐ steel

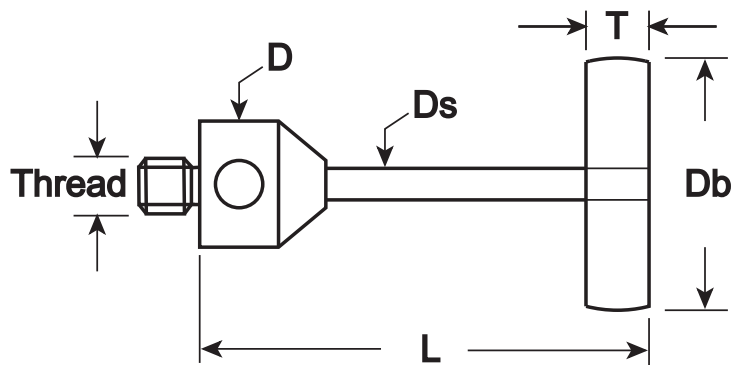
Stem material: ☐ carbide ☐ ceramic ☐ graphite ☐ steel ☐ other _____

Base material: ☐ stainless steel ☐ aluminum ☐ titanium ☐ other _____

Comments / special requirements _____

DESIGN YOUR OWN DISK PROBE

- ☒ PHOTOCOPY THIS PAGE
☒ FILL IN THE BLANKS



Db	T	L	Ds	D	Thread	Quantity

Your Name _____ Phone _____

Company _____ Fax _____

Disk material: ☐ hard steel ☐ nickel plated aluminum ☐ other _____

Stem material: ☐ carbide ☐ other _____

Base material: ☐ stainless steel ☐ other _____

Comments / special requirements _____

Cross Reference List

RENISHAW to our part numbers

The equivalent part numbers are printed in **BOLD TYPE** within the catalog

RENISHAW #	OUR#	Page #	RENISHAW #	OUR #	Page #
A-5000-3551	TM3-1021-S	22	A-5003-0057	TM3-3031	25
A-5000-3552	TM3-2022-S	24	A-5003-0058	TM3-3041	25
A-5000-3553	TM3-3022-S	25	A-5003-0059	TM3-3051	25
A-5000-3554	TM3-4033-S	26	A-5003-0060	TM3-4042	26
A-5000-3603	TM2-2020-S	8	A-5003-0061	TM3-4052	26
A-5000-3604	TM2-3010-S	9	A-5003-0062	TM3-5042	26
A-5000-3626	QM2-2030	18	A-5003-0063	TM3-5052	27
A-5000-4154	TM2-4010-S	10	A-5003-0064	TM2-3051.5-C	9
A-5000-4155	TM2-5010-S	10	A-5003-0065	TM2-4052-C	10
A-5000-4156	TM2-6010-S	11	A-5003-0066	TM2-5052.5-C	11
A-5000-4158	TM2-8010-S	12	A-5003-0067	TM3-3051-C	25
A-5000-4160	TM2-3020-S	9	A-5003-0068	TM3-4052-C	26
A-5000-4161	TM2-4020-S	10	A-5003-0069	TM3-5052-C	27
A-5000-4164	RM2-M3	17	A-5003-0070	VM2-30-C	15
A-5000-7534	GM2-16	16	A-5003-0071	VM2-40-C	15
A-5000-7606	TM3-4023-S	26	A-5003-0072	VM2-50-C	15
A-5000-7610	KM3-13	32	A-5003-0073	TM2-4022-B	14
A-5000-7616	GM3-20	32	A-5003-0074	TM2-2040-BC	14
A-5000-7629	QM2-2020	18	A-5003-0075	VM3-50-C	31
A-5000-7630	TM3-5023-S	26	A-5003-0076	STR3-2030	32
A-5000-7632	TM3-0521-02	21	A-5003-0077	STR3-2050	32
A-5000-7648	TM3-5033-S	26	A-5003-0577	TM2-0720	5
A-5000-7800	TM2-0310-R	4	A-5003-1208	TM2-0310-BC	13
A-5000-7801	TM2-0710	5	A-5003-1210	TM2-0515-BC	13
A-5000-7802	TM2-1510-S	7	A-5003-1218	TM2-1036-BC	13
A-5000-7803	TM2-2510-S	8	A-5003-1219	TM2-1516-BC	14
A-5000-7804	TM2-2520-S	8	A-5003-1228	TM2-2016-BC	14
A-5000-7805	TM2-0510-R	4	A-5003-1258	TM2-3023-BC	14
A-5000-7806	TM2-1010-S	7	A-5003-2280	VM2-40-G	15
A-5000-7807	TM2-2010-S	7	A-5003-2281	VM2-50-G	15
A-5000-7808	TM2-1020-07	7	A-5003-2282	VM2-70-G	15
A-5000-7812	TM2-2021-B	14	A-5003-2283	VM2-90-G	15
A-5000-8663	TM2-1027-DS.7	7	A-5003-2285	TM2-4052-G	10
A-5000-8876	TM2-1015-B	13	A-5003-2286	TM2-5052.5-G	11
A-5000-8877	TM2-1515-B	14	A-5003-2287	TM2-6053-G	11
A-5003-0033	TM2-1020-DS.8	7	A-5003-4860	TM3-6078-G	27
A-5003-0034	TM2-1520	7	A-5003-4861	TM3-60103-G	27
A-5003-0035	TM2-1530-DS1	7	A-5003-4862	TM3-8079-G	27
A-5003-0036	TM2-2031	8	A-5003-4863	TM3-80104-G	27
A-5003-0037	TM2-2041	8	A-5003-4864	VM3-75-G	31
A-5003-0038	TM2-2531	8	A-5003-4865	VM3-100-G	31
A-5003-0039	TM2-2541	8	A-5003-5061	TM3-4023-S-SN	26
A-5003-0040	TM2-3031.5	9	A-5003-5723	TM3-2022-S-SN	24
A-5003-0041	TM2-3041.5	9	A-5003-5724	TM3-2031-SN	24
A-5003-0042	TM2-3051.5	9	A-5003-5725	TM3-4052-C-SN	26
A-5003-0043	TM2-4032	10	A-5003-5726	TM3-6078-G-SN	27
A-5003-0044	TM2-4042	10	A-5003-5727	TM3-60103-G-SN	27
A-5003-0045	TM2-4052	10	M-5000-3592	VM3-20	31
A-5003-0046	TM2-5022.5	10	M-5000-3593	VM3-35	31
A-5003-0047	TM2-5032.5	10	M-5000-3647	VM2-10	15
A-5003-0048	TM2-5042.5	11	M-5000-3648	VM2-20	15
A-5003-0049	TM2-5052.5	11	M-5000-4152	TM2-1511-CYL	14
A-5003-0050	TM3-1522	24	M-5000-4153	TM2-3013-CYL	14
A-5003-0051	TM3-1531-DS1	24	M-5000-4162	VM2-30	15
A-5003-0052	TM3-2031	24	M-5000-4163	RM3-M2	33
A-5003-0053	TM3-2041	24	M-5000-7633	VM3-10	31
A-5003-0054	TM3-2522	25	M-5000-7634	VM2-5	15
A-5003-0055	TM3-2531	25	M-5000-7779	VM2-40	15
A-5003-0056	TM3-2541	25			

Cross Reference List
ZEISS to our part numbers

The equivalent part numbers are printed in **BOLD TYPE** within the catalog

<u>ZEISS #</u>	<u>OUR #</u>	<u>Page #</u>
626103.0300.033	TM3-3033-TX	29
626103.0300.050	TM3-3050-TX	29
626103.0301.040	TM3-3040-TX	29
626103.0500.030	TM3-5030-TX	29
626103.0500.075	TM3-5075-TX-SN	29
626103.0501.050	TM3-5050-TX	29
626103.0501.075	TM3-5075-TX	29
626103.0600.100	TM3-60100-TX	29
626103.0800.125	TM3-80125-TX	29
626103.5050.000	VM3-50-TX	30

REPLACEMENT BALLS

We'll repair any stylus with a lost or broken ball 0.6 mm and larger **if the stem is intact.**

We're sorry, but:

0.3 mm and 0.5 mm balls can't be replaced.

Chipped or worn balls can't be replaced.